

## Product datasheet for PH301109

### HAGH (NM\_005326) Human Mass Spec Standard

#### Product data:

Product Type:	Mass Spec Standards
Description:	HAGH MS Standard C13 and N15-labeled recombinant protein (NP_005317)
Species:	Human
Expression Host:	HEK293
Expression cDNA Clone or AA Sequence:	RC201109
Predicted MW:	33.8 kDa
Protein Sequence:	>RC201109 protein sequence Red=Cloning site Green=Tags(s)

MVVGRGLLGRRSLAALGAACARRGLGPALLGVFCHTDLRKNLTVDEGTMKVEVLPALTDNYMYLVIDDET  
KEAAIVDPVQPQKVYDAARKHGKLTTLVLTTHHHWDHAGGNEKLVKLESGLKVYGGDDRIGALTHKITHL  
STLQVGS LN VKCLATPCHTSGHICYFVSKPGGSEPPAVFTGDTL FVAGCGKFYEGTADEMCKALLEVLGR  
LPPDTRVYCGHEYTINNLFARHVEPGNAAIREKLAWAKEKYSIGEPTVPSTLAEFTYNPFMVRREKTV  
QQHAGETDPVTTMRAVRREKDQFKMPRD

TRTRPLEQKLI SEEDLAANDILDYKDDDDKV

Tag:	C-Myc/DDK
Purity:	> 80% as determined by SDS-PAGE and Coomassie blue staining
Concentration:	>0.05 µg/µL as determined by microplate BCA method
Labeling Method:	Labeled with [U- <sup>13</sup> C <sub>6</sub> , <sup>15</sup> N <sub>4</sub> ]-L-Arginine and [U- <sup>13</sup> C <sub>6</sub> , <sup>15</sup> N <sub>2</sub> ]-L-Lysine
Buffer:	25 mM Tris-HCl, 100 mM glycine, pH 7.3
Storage:	Store at -80°C. Avoid repeated freeze-thaw cycles.
Stability:	Stable for 3 months from receipt of products under proper storage and handling conditions.
RefSeq:	<u><a href="#">NP_005317</a></u>
RefSeq Size:	1552
RefSeq ORF:	924
Synonyms:	GLO2; GLX2; GLXII; HAGH1
Locus ID:	3029



[View online »](#)

UniProt ID: [Q16775](#)

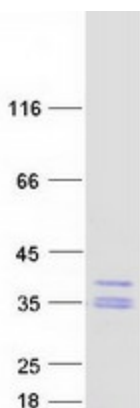
Cytogenetics: 16p13.3

Summary: The enzyme encoded by this gene is classified as a thiolesterase and is responsible for the hydrolysis of S-lactoyl-glutathione to reduced glutathione and D-lactate. Three transcript variants encoding different isoforms have been found for this gene. [provided by RefSeq, Oct 2013]

Protein Families: Druggable Genome

Protein Pathways: Pyruvate metabolism

### Product images:



Coomassie blue staining of purified HAGH protein (Cat# [TP301109]). The protein was produced from HEK293T cells transfected with HAGH cDNA clone (Cat# [RC201109]) using MegaTran 2.0 (Cat# [TT210002]).