

Product datasheet for PH301100

KIF20A (NM_005733) Human Mass Spec Standard

Product data:

Product Type:	Mass Spec Standards
Description:	KIF20A MS Standard C13 and N15-labeled recombinant protein (NP_005724)
Species:	Human
Expression Host:	HEK293
Expression cDNA Clone or AA Sequence:	RC201100
Predicted MW:	100.1 kDa
Protein Sequence:	>RC201100 representing NM_005733 Red=Cloning site Green=Tags(s)

MSQGILSPPAGLLSDDVVVSPMFESTAADLGSVVRKNLLSDCSVVSTSLQVPSSEDSMEKVKVYLR
VRPLLPELERQEDQGCVRIENVETLVLQAPKDSFALKSNERGIGQATHRFTFSQIFGPEVQGASFFNLT
VKEMVKDVLKQGNWLIYTYGVVNSGKTHTIQGTIKDGGILPRSLALIFNSLQGGQLHPTDLKPLLSNEVI
WLDSKQIRQEEEMKLLSLLNGGLQEEELSTSLKRSVYIESRIGTSTSFDSGIAGLSSISQCTSSSQLDETS
HRWAQPDAPLPV PANIRFSIWI SFFEIYNELL YDLLEPPSQQRKQRTLRLCEDQNGNPNYKDLNWIHVQ
DAEEAWKLLKVGKRNQSFASHTLNQNSSRSHSIF SIRILHLQEGGDIVPKISELSL CDLAGSERCKDQKS
GERLKEAGNINTSLHTLGRGIAALRQNNRQNSKQNLV PFRD SKL TRVFQGF FTGRGRSCMIVNVNPCAST
YDETLHVAKFSAIASQLVHAPPMQLGFPSLSHF I KEHSLQVSPSLEKGAADTGLDDDIENEADISMYGK
EELLQVVEAMKTLKLLKERQEKLEMLRDEICNEMVEQMQQREQWCSEHLDTQKELLEEMYEKLNILK
ESLTSFYQEEIQERDEKIEELEALLQEARQQSVAHQQSGSELALRRSQRLAASASTQQLQEYKAKLQCK
AELNSTTEELHKYQKMLEPPPSAKPFTIDVDKLEEGQKNIRLLRTELQKLGESLQSAERACCHSTGAGK
LRQALTTCDLILIKQDQTLAELQNNMVLVKLDLRKKAACIAEQYHTVLKLGQVSAKKRLGTNQNENQPPN
QQPPGKKPFLRNLLPRTPTCQSSTDCSPYARILRSRRSPLKSGPFGKKY

TRTRPLEQKLI SEEDLAANDILDYKDDDDKV

Tag:	C-Myc/DDK
Purity:	> 80% as determined by SDS-PAGE and Coomassie blue staining
Concentration:	>0.05 µg/µL as determined by microplate BCA method
Labeling Method:	Labeled with [U- ¹³ C ₆ , ¹⁵ N ₄]-L-Arginine and [U- ¹³ C ₆ , ¹⁵ N ₂]-L-Lysine
Buffer:	25 mM Tris-HCl, 100 mM glycine, pH 7.3
Storage:	Store at -80°C. Avoid repeated freeze-thaw cycles.
Stability:	Stable for 3 months from receipt of products under proper storage and handling conditions.



[View online »](#)

RefSeq: [NP_005724](#)

RefSeq Size: 2972

RefSeq ORF: 2670

Synonyms: MKLP2; RAB6KIFL

Locus ID: 10112

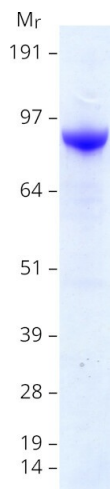
UniProt ID: [O95235](#)

Cytogenetics: 5q31.2

Summary: Mitotic kinesin required for chromosome passenger complex (CPC)-mediated cytokinesis. Following phosphorylation by PLK1, involved in recruitment of PLK1 to the central spindle. Interacts with guanosine triphosphate (GTP)-bound forms of RAB6A and RAB6B. May act as a motor required for the retrograde RAB6 regulated transport of Golgi membranes and associated vesicles along microtubules. Has a microtubule plus end-directed motility. [UniProtKB/Swiss-Prot Function]

Protein Families: Druggable Genome

Product images:



Coomassie blue staining of purified KIF20A protein (Cat# [TP301100]). The protein was produced from HEK293T cells transfected with KIF20A cDNA clone (Cat# [RC201100]) using MegaTran 2.0 (Cat# [TT210002]).