

Product datasheet for PH301097

WHSC2 (NELFA) (NM_005663) Human Mass Spec Standard

Product data:

Product Type:	Mass Spec Standards
Description:	WHSC2 MS Standard C13 and N15-labeled recombinant protein (NP_005654)
Species:	Human
Expression Host:	HEK293
Expression cDNA Clone or AA Sequence:	RC201097
Predicted MW:	57.3 kDa
Protein Sequence:	>RC201097 protein sequence Red=Cloning site Green=Tags(s)

MASMRESDTGLWLHNKLGATDELWAPPSIASLLTAAVIDNIRLCFHGLSSAVKLLKLLGTLHLPRRTVDE
MKGALMEIIQLASLDSDPWVLMVADILKSFPDTGSLNLELEEQNPVQDILGELREKVGCEASAMLPLE
CQYLNKNALTTLAGPLTPPVKHFQLKRKPKSATLRAELLQKSTETAQQLKRSAGVPFHAKGRGLLRKMDT
TTPLKGIPKQAPFRSPTAPSVFSPTGNRTPIPPSRTLLRKERGVKLLDISELDMVGAGREARRRKTLD
EVVEKPAKEETVVENATPDYAAGLVSTQKLGSLNNEPALPSTSYLPSTPSVVPASSYIPSETPPAPSSR
EASRPPEEPSAPSPTLPAQFKQRAPMYNSGLSPATPTAAPTSPLETPPTPPAVAPTTQTPPVAMVAPQTQ
APAQQQPKKNLSLTREQMFAAQEMFKTANKVTRPEKALILGFMAGSRENPCQEQGDVVIQIKLSEHTEDLP
KADGGSTTMLVDTVFEMNYATGQWTRFKKYKPMTNVS

SGPTRTRPLEQKLI SEEDLAANDILDYKDDDDKV

Tag:	C-Myc/DDK
Purity:	> 80% as determined by SDS-PAGE and Coomassie blue staining
Concentration:	>0.05 µg/µL as determined by microplate BCA method
Labeling Method:	Labeled with [U- 13C6, 15N4]-L-Arginine and [U- 13C6, 15N2]-L-Lysine
Buffer:	25 mM Tris-HCl, 100 mM glycine, pH 7.3
Storage:	Store at -80°C. Avoid repeated freeze-thaw cycles.
Stability:	Stable for 3 months from receipt of products under proper storage and handling conditions.
RefSeq:	NP_005654
RefSeq Size:	2479
RefSeq ORF:	1584



[View online »](#)

Synonyms: NELF-A; P/OKcl.15; WHSC2

Locus ID: 7469

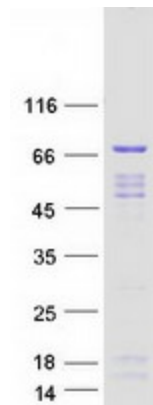
UniProt ID: [Q9H3P2](#), [A0A0C4DFX9](#)

Cytogenetics: 4p16.3

Summary: This gene is expressed ubiquitously with higher levels in fetal than in adult tissues. It encodes a protein sharing 93% sequence identity with the mouse protein. Wolf-Hirschhorn syndrome (WHS) is a malformation syndrome associated with a hemizygous deletion of the distal short arm of chromosome 4. This gene is mapped to the 165 kb WHS critical region, and may play a role in the phenotype of the WHS or Pitt-Rogers-Danks syndrome. The encoded protein is found to be capable of reacting with HLA-A2-restricted and tumor-specific cytotoxic T lymphocytes, suggesting a target for use in specific immunotherapy for a large number of cancer patients. This protein has also been shown to be a member of the NELF (negative elongation factor) protein complex that participates in the regulation of RNA polymerase II transcription elongation. [provided by RefSeq, Jul 2008]

Protein Families: Transcription Factors

Product images:



Coomassie blue staining of purified NELFA protein (Cat# [TP301097]). The protein was produced from HEK293T cells transfected with NELFA cDNA clone (Cat# [RC201097]) using MegaTran 2.0 (Cat# [TT210002]).