

Product datasheet for PH301090

AMSH (STAMPB) (NM_201647) Human Mass Spec Standard

Product data:

| | |
|---------------------------------------|--|
| Product Type: | Mass Spec Standards |
| Description: | STAMPB MS Standard C13 and N15-labeled recombinant protein (NP_964010) |
| Species: | Human |
| Expression Host: | HEK293 |
| Expression cDNA Clone or AA Sequence: | RC201090 |
| Predicted MW: | 48.1 kDa |
| Protein Sequence: | >RC201090 protein sequence Red=Cloning site Green=Tags(s) |

MSDHGDVSLPPEDRVRLSQLGSAVEVNEDIIPRRYFRSGVEIIRMASIYSEEGNIEHAFILYNKYITLF
IEKLPKHRDYKSAVIPEKKDVTVKLKEIAFPKAEELKAELLKRYTKEYTEYNEEKKKEAEELARNMAIQQ
ELEKEKQRVAQQKQQLEQEQFHAFEEMIRNQELEKERLKIVQEFGKVDPLGGPLVPDLEKPSLDVFPPT
LTVSSIQPSDCHTTVRPAKPPVDRSLKPGALSNSESIPTIDGLRHVVVPGRLCPQFLQLASANTARGVE
TCGILCGKLMRNEFTITHVLIPKQSAGSDYCNTENEEELFLIQDQQLITLGIWHTHTPTQTAFLSSVDLH
THCSYQMMLPESVAIVCSPKFQETGFFKLDHGLEEISSCRQKGFPHSKDPPLFCSCSHVTVDRAVTI
TDLR

TRTRPLEQKLISEEDLAANDILDYKDDDDKV

| | |
|------------------|--|
| Tag: | C-Myc/DDK |
| Purity: | > 80% as determined by SDS-PAGE and Coomassie blue staining |
| Concentration: | >0.05 µg/µL as determined by microplate BCA method |
| Labeling Method: | Labeled with [U- ¹³ C ₆ , ¹⁵ N ₄]-L-Arginine and [U- ¹³ C ₆ , ¹⁵ N ₂]-L-Lysine |
| Buffer: | 25 mM Tris-HCl, 100 mM glycine, pH 7.3 |
| Storage: | Store at -80°C. Avoid repeated freeze-thaw cycles. |
| Stability: | Stable for 3 months from receipt of products under proper storage and handling conditions. |
| RefSeq: | <u>NP_964010</u> |
| RefSeq Size: | 6277 |
| RefSeq ORF: | 1272 |
| Synonyms: | AMSH; MICCAP |



[View online »](#)

Locus ID: 10617

UniProt ID: [O95630](#), [A0A140VK54](#)

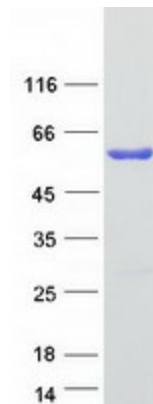
Cytogenetics: 2p13.1

Summary: Cytokine-mediated signal transduction in the JAK-STAT cascade requires the involvement of adaptor molecules. One such signal-transducing adaptor molecule contains an SH3 domain that is required for induction of MYC and cell growth. The protein encoded by this gene binds to the SH3 domain of the signal-transducing adaptor molecule, and plays a critical role in cytokine-mediated signaling for MYC induction and cell cycle progression. Multiple alternatively spliced transcript variants encoding the same protein isoform have been found for this gene. [provided by RefSeq, Jul 2008]

Protein Families: Druggable Genome

Protein Pathways: Endocytosis

Product images:



Coomassie blue staining of purified STAMPB protein (Cat# [TP301090]). The protein was produced from HEK293T cells transfected with STAMPB cDNA clone (Cat# [RC201090]) using MegaTran 2.0 (Cat# [TT210002]).