

Product datasheet for PH301085

NSE (ENO2) (NM_001975) Human Mass Spec Standard

Product data:

Product Type:	Mass Spec Standards
Description:	ENO2 MS Standard C13 and N15-labeled recombinant protein (NP_001966)
Species:	Human
Expression Host:	HEK293
Expression cDNA Clone or AA Sequence:	RC201085
Predicted MW:	47.3 kDa
Protein Sequence:	>RC201085 protein sequence Red=Cloning site Green=Tags(s)

MSIEKIWAREILDSRGNPTVEVDLYTAKGLFRAAVPSGASTGIYEALELRDGDQRYLGKGVLKAVDHN
STIAPALISSGLSVVEQEKLNLMLLELDGTENKSKFGANAILGVSLAVCKAGAAERELPLYRHIAQLAGN
SDLILPVPFNVINGGSHAGNKLAMQEFMILPVGAESEFRDAMRLGAEVYHTLKGVIKDKYGKDATNVGDE
GGFAPNILENSEALELVKEAIDKAGYTEKIVIGMDVAASEFYRDGKYDLDFKSPTDPSRYITGDQLGALY
QDFVRDYPVVSIEDPFDQDDWAWSKFTANVGIQIVGDDLTVTNPKRIERAEEKACNCLLLKVNQIGSV
TEAIQACKLAQENGWGMVSHRSGETEDTFIADLVVGLCTGQIKTGAPCRSERLAKYNQLMRIEELGDE
ARFAGHNFRNPSVL

TRTRPLEQKLISEEDLAANDILDYKDDDDKV

Tag:	C-Myc/DDK
Purity:	> 80% as determined by SDS-PAGE and Coomassie blue staining
Concentration:	>0.05 µg/µL as determined by microplate BCA method
Labeling Method:	Labeled with [U- ¹³ C ₆ , ¹⁵ N ₄]-L-Arginine and [U- ¹³ C ₆ , ¹⁵ N ₂]-L-Lysine
Buffer:	25 mM Tris-HCl, 100 mM glycine, pH 7.3
Storage:	Store at -80°C. Avoid repeated freeze-thaw cycles.
Stability:	Stable for 3 months from receipt of products under proper storage and handling conditions.
RefSeq:	<u>NP_001966</u>
RefSeq Size:	2423
RefSeq ORF:	1302
Synonyms:	HEL-S-279; NSE



[View online »](#)

Locus ID: 2026

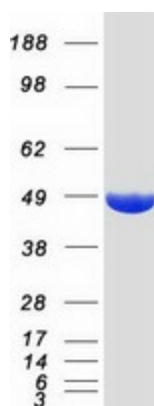
UniProt ID: [P09104](#), [Q6FHV6](#)

Cytogenetics: 12p13.31

Summary: This gene encodes one of the three enolase isoenzymes found in mammals. This isoenzyme, a homodimer, is found in mature neurons and cells of neuronal origin. A switch from alpha enolase to gamma enolase occurs in neural tissue during development in rats and primates. [provided by RefSeq, Jul 2008]

Protein Pathways: Glycolysis / Gluconeogenesis, Metabolic pathways, RNA degradation

Product images:



Coomassie blue staining of purified ENO2 protein (Cat# [TP301085]). The protein was produced from HEK293T cells transfected with ENO2 cDNA clone (Cat# [RC201085]) using MegaTran 2.0 (Cat# [TT210002]).