

## Product datasheet for PH301083

### TOMM34 (NM\_006809) Human Mass Spec Standard

#### Product data:

Product Type:	Mass Spec Standards
Description:	TOMM34 MS Standard C13 and N15-labeled recombinant protein (NP_006800)
Species:	Human
Expression Host:	HEK293
Expression cDNA Clone or AA Sequence:	RC201083
Predicted MW:	34.6 kDa
Protein Sequence:	>RC201083 protein sequence <b>Red</b> =Cloning site <b>Green</b> =Tags(s)  MAPKFPDSVEELRAAGNESFRNGQYAEASALYGRALRVLQAQSSDPEEESVLYSNRAACHLKDGNCRDC IKDCTSALALVPFSIKPLLRRASAYEAEKYPMAYVDYKTVLQIDDNVTSAVEGINRMTRALMDSLGP EWRLKLPISLPLVPSAQKRWNSLPSENHKEMAKSKSKETTATKNRVPSAGDVEKARVLKEEGNELVKKGNHK KAIEKYSESLLCNLESATYSNRALCYLVLKQYTEAVKDCTEALKLDGKNVKAIFYRRAQAHKALKDYKSS FADISNLLQIEPRNGPAQKLRQEVKQNLH  <b>TRTRPLEQKLISEEDLAANDILDYKDDDDKV</b>
Tag:	C-Myc/DDK
Purity:	> 80% as determined by SDS-PAGE and Coomassie blue staining
Concentration:	>0.05 µg/µL as determined by microplate BCA method
Labeling Method:	Labeled with [U- <sup>13</sup> C <sub>6</sub> , <sup>15</sup> N <sub>4</sub> ]-L-Arginine and [U- <sup>13</sup> C <sub>6</sub> , <sup>15</sup> N <sub>2</sub> ]-L-Lysine
Buffer:	25 mM Tris-HCl, 100 mM glycine, pH 7.3
Storage:	Store at -80°C. Avoid repeated freeze-thaw cycles.
Stability:	Stable for 3 months from receipt of products under proper storage and handling conditions.
RefSeq:	<a href="#">NP_006800</a>
RefSeq Size:	2066
RefSeq ORF:	927
Synonyms:	HTOM34P; TOM34; URCC3
Locus ID:	10953



[View online »](#)

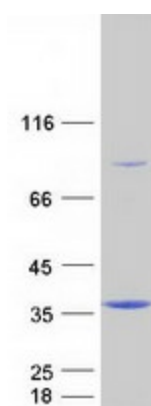
UniProt ID: [Q15785](#)

Cytogenetics: 20q13.12

**Summary:** The protein encoded by this gene is involved in the import of precursor proteins into mitochondria. The encoded protein has a chaperone-like activity, binding the mature portion of unfolded proteins and aiding their import into mitochondria. This protein, which is found in the cytoplasm and sometimes associated with the outer mitochondrial membrane, has a weak ATPase activity and contains 6 TPR repeats. [provided by RefSeq, Jul 2008]

Protein Families: Druggable Genome

### Product images:



Coomassie blue staining of purified TOMM34 protein (Cat# [TP301083]). The protein was produced from HEK293T cells transfected with TOMM34 cDNA clone (Cat# [RC201083]) using MegaTran 2.0 (Cat# [TT210002]).