

## Product datasheet for PH301080

### MYL9 (NM\_181526) Human Mass Spec Standard

#### Product data:

|                                       |  |
|---------------------------------------|--|
| Product Type:                         | Mass Spec Standards  |
| Description:                          | MYL9 MS Standard C13 and N15-labeled recombinant protein (NP_852667)   |
| Species:                              | Human  |
| Expression Host:                      | HEK293   |
| Expression cDNA Clone or AA Sequence: | RC201080   |
| Predicted MW:                         | 13.9 kDa   |
| Protein Sequence:                     | >RC201080 protein sequence<br><b>Red</b> =Cloning site <b>Green</b> =Tags(s)<br><br>MSSKRAKAKTTKKRPQRATSNVFAFDQSQIQEFKEAFNMIDQNRDGFIDKEDLHDMLASLGFIEDHLR<br>ELLTTMGDRFTDEEVDEMYREAPIDKKGNFNYVEFTRILKHGAKDKDD<br><br><b>TRTRPLEQKLISEEDLAANDILDYKDDDDKV</b> |
| Tag:                                  | C-Myc/DDK  |
| Purity:                               | > 80% as determined by SDS-PAGE and Coomassie blue staining  |
| Concentration:                        | >0.05 µg/µL as determined by microplate BCA method   |
| Labeling Method:                      | Labeled with [U- 13C6, 15N4]-L-Arginine and [U- 13C6, 15N2]-L-Lysine   |
| Buffer:                               | 25 mM Tris-HCl, 100 mM glycine, pH 7.3   |
| Storage:                              | Store at -80°C. Avoid repeated freeze-thaw cycles.   |
| Stability:                            | Stable for 3 months from receipt of products under proper storage and handling conditions.   |
| RefSeq:                               | <a href="#">NP_852667</a>  |
| RefSeq Size:                          | 1054   |
| RefSeq ORF:                           | 354  |
| Synonyms:                             | LC20; MLC-2C; MLC2; MMIHS4; MRLC1; MYRL2   |
| Locus ID:                             | 10398  |
| UniProt ID:                           | <a href="#">P24844</a>   |
| Cytogenetics:                         | 20q11.23   |

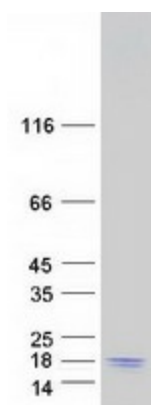


[View online »](#)

**Summary:** Myosin, a structural component of muscle, consists of two heavy chains and four light chains. The protein encoded by this gene is a myosin light chain that may regulate muscle contraction by modulating the ATPase activity of myosin heads. The encoded protein binds calcium and is activated by myosin light chain kinase. Two transcript variants encoding different isoforms have been found for this gene. [provided by RefSeq, Jul 2008]

**Protein Pathways:** Focal adhesion, Leukocyte transendothelial migration, Regulation of actin cytoskeleton, Tight junction, Vascular smooth muscle contraction

**Product images:**



Coomassie blue staining of purified MYL9 protein (Cat# [TP301080]). The protein was produced from HEK293T cells transfected with MYL9 cDNA clone (Cat# [RC201080]) using MegaTran 2.0 (Cat# [TT210002]).