

Product datasheet for PH301079

SSR3 (NM_007107) Human Mass Spec Standard

Product data:

Product Type:	Mass Spec Standards
Description:	SSR3 MS Standard C13 and N15-labeled recombinant protein (NP_009038)
Species:	Human
Expression Host:	HEK293
Expression cDNA Clone or AA Sequence:	RC201079
Predicted MW:	21.1 kDa
Protein Sequence:	>RC201079 protein sequence Red=Cloning site Green=Tags(s) MAPKGSSKQQSEEDLLLQDFSRNLSAKSSALFFGNAFIVSAIPWLYWRIWHMDLIQSAVLVSVMTLVST YLVAFAYKNVFLVKKHVAQKREDAVSKEVTRKLSEADNRKMSRKEKDERILWKKNEVADYEATTFSIFY NNTLFLVVIVASFFILKNFNPTVNYILSISASSGLIALLLSTGSK SGPTRTRPLEQKLISEEDLAANDILDYKDDDDKV
Tag:	C-Myc/DDK
Purity:	> 80% as determined by SDS-PAGE and Coomassie blue staining
Concentration:	>0.05 µg/µL as determined by microplate BCA method
Labeling Method:	Labeled with [U- ¹³ C ₆ , ¹⁵ N ₄]-L-Arginine and [U- ¹³ C ₆ , ¹⁵ N ₂]-L-Lysine
Buffer:	25 mM Tris-HCl, 100 mM glycine, pH 7.3
Storage:	Store at -80°C. Avoid repeated freeze-thaw cycles.
Stability:	Stable for 3 months from receipt of products under proper storage and handling conditions.
RefSeq:	<u>NP_009038</u>
RefSeq Size:	3734
RefSeq ORF:	555
Synonyms:	TRAPG
Locus ID:	6747
UniProt ID:	<u>Q9UNL2</u>

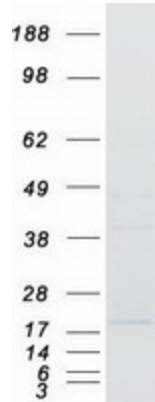

[View online »](#)

Cytogenetics: 3q25.31

Summary: The signal sequence receptor (SSR) is a glycosylated endoplasmic reticulum (ER) membrane receptor associated with protein translocation across the ER membrane. The SSR is comprised of four membrane proteins/subunits: alpha, beta, gamma, and delta. The first two are glycosylated subunits and the latter two are non-glycosylated subunits. This gene encodes the gamma subunit, which is predicted to span the membrane four times. [provided by RefSeq, Aug 2010]

Protein Families: Druggable Genome, Transmembrane

Product images:



Coomassie blue staining of purified SSR3 protein (Cat# [TP301079]). The protein was produced from HEK293T cells transfected with SSR3 cDNA clone (Cat# [RC201079]) using MegaTran 2.0 (Cat# [TT210002]).