

## Product datasheet for PH301069

### CDC42EP3 (NM\_006449) Human Mass Spec Standard

#### Product data:

Product Type:	Mass Spec Standards
Description:	CDC42EP3 MS Standard C13 and N15-labeled recombinant protein (NP_006440)
Species:	Human
Expression Host:	HEK293
Expression cDNA Clone or AA Sequence:	RC201069
Predicted MW:	27.7 kDa
Protein Sequence:	>RC201069 protein sequence Red=Cloning site Green=Tags(s)  MPAKTPIYLKAANNKKGKFKLRDILSPDMISPLGDFRHTIHIHGKEGQHDVFGDISFLQGYELLPGNQ EKAHLGQFPGHNEFFRANSTSDSVFTETPSPVLKNAISLPTIGGSQALMLPLLSPVTFNSKQESFGPAKL PRLSCEPYMEEKAQEKSLLLENGTVHQGDTSWGSSGSASQSSQGRDSSHSSLSSEQYPDWPAEDMFDHPTP CELIKGKTKSEESLSDLTGSLLSLQLDLGPSLLDEVLVNMDKNK  TRTRPLEQKLI SEEDLAANDILDYKDDDDKV
Tag:	C-Myc/DDK
Purity:	> 80% as determined by SDS-PAGE and Coomassie blue staining
Concentration:	>0.05 µg/µL as determined by microplate BCA method
Labeling Method:	Labeled with [U- 13C6, 15N4]-L-Arginine and [U- 13C6, 15N2]-L-Lysine
Buffer:	25 mM Tris-HCl, 100 mM glycine, pH 7.3
Storage:	Store at -80°C. Avoid repeated freeze-thaw cycles.
Stability:	Stable for 3 months from receipt of products under proper storage and handling conditions.
RefSeq:	<a href="#">NP_006440</a>
RefSeq Size:	5715
RefSeq ORF:	762
Synonyms:	BORG2; CEP3; UB1
Locus ID:	10602
UniProt ID:	<a href="#">Q9UKI2</a>

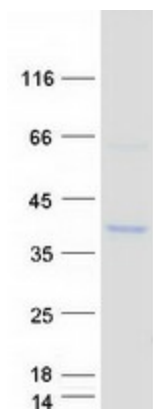


[View online »](#)

Cytogenetics: 2p22.2

**Summary:** This gene encodes a member of a small family of guanosine triphosphate (GTP) metabolizing proteins that contain a CRIB (Cdc42, Rac interactive binding) domain. Members of this family of proteins act as effectors of CDC42 function. The encoded protein is involved in actin cytoskeleton re-organization during cell shape changes, including pseudopodia formation. A pseudogene of this gene is found on chromosome 19. Alternative splicing results in multiple transcript variants. [provided by RefSeq, Jul 2012]

### Product images:



Coomassie blue staining of purified CDC42EP3 protein (Cat# [TP301069]). The protein was produced from HEK293T cells transfected with CDC42EP3 cDNA clone (Cat# [RC201069]) using MegaTran 2.0 (Cat# [TT210002]).