

Product datasheet for PH301061

CMTM6 (NM_017801) Human Mass Spec Standard

Product data:

Product Type:	Mass Spec Standards
Description:	CMTM6 MS Standard C13 and N15-labeled recombinant protein (NP_060271)
Species:	Human
Expression Host:	HEK293
Expression cDNA Clone or AA Sequence:	RC201061
Predicted MW:	20.4 kDa
Protein Sequence:	>RC201061 protein sequence Red =Cloning site Green =Tags(s) MENGAVYSPTTEEDPGPARGPRSLAAYFFMGRLPLLRRLKGLQLLLSLLAFICEEVVSQCTLCGGLYF FEFVSCSAFLLSLLILIVYCTPFYERVDTTKVKSDFYITLGTGCVFLLASIIIFVSTHDRTSAEIAAIVF GFIASFMFLDFITMLYEKRQESQLRPENTTRAALTEPLNA TR TRPLEQKLISEEDLAANDILDYKDDDDKV
Tag:	C-Myc/DDK
Purity:	> 80% as determined by SDS-PAGE and Coomassie blue staining
Concentration:	>0.05 µg/µL as determined by microplate BCA method
Labeling Method:	Labeled with [U- 13C6, 15N4]-L-Arginine and [U- 13C6, 15N2]-L-Lysine
Buffer:	25 mM Tris-HCl, 100 mM glycine, pH 7.3
Storage:	Store at -80°C. Avoid repeated freeze-thaw cycles.
Stability:	Stable for 3 months from receipt of products under proper storage and handling conditions.
RefSeq:	NP_060271
RefSeq Size:	3384
RefSeq ORF:	549
Synonyms:	CKLFSF6; PRO2219
Locus ID:	54918
UniProt ID:	Q9NX76



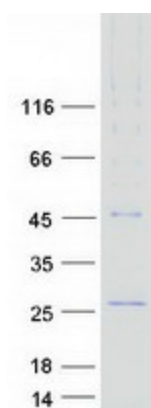
[View online »](#)

Cytogenetics: 3p22.3

Summary: This gene belongs to the chemokine-like factor gene superfamily, a novel family that is similar to the chemokine and transmembrane 4 superfamilies. This gene is one of several chemokine-like factor genes located in a cluster on chromosome 3. This gene is widely expressed in many tissues, but the exact function of the encoded protein is unknown. [provided by RefSeq, Jul 2008]

Protein Families: Transmembrane

Product images:



Coomassie blue staining of purified CMTM6 protein (Cat# [TP301061]). The protein was produced from HEK293T cells transfected with CMTM6 cDNA clone (Cat# [RC201061]) using MegaTran 2.0 (Cat# [TT210002]).