

## Product datasheet for PH301052

### CEP55 (NM\_018131) Human Mass Spec Standard

#### Product data:

Product Type:	Mass Spec Standards
Description:	CEP55 MS Standard C13 and N15-labeled recombinant protein (NP_060601)
Species:	Human
Expression Host:	HEK293
Expression cDNA Clone or AA Sequence:	RC201052
Predicted MW:	54.1 kDa
Protein Sequence:	>RC201052 protein sequence Red=Cloning site Green=Tags(s)

MSSRSTKDLIKSKWGSKPSNSKSETTLEKLGKEIAHLKTSVDEITSGKGLTDKERHRLLEKIRVLEAEK  
EKNAYQLTEKDKEIQRLRDQLKARYSTTALLEQLEETTREGERRERQVLKALSEEKDVLLKQQLSAATSRIA  
ELESKTNTLRLSQTVAPNCFNSSINNIHEMEIQLKDALEKNQQLVYDQQREVVYKGLLAKIFELEKTE  
TAAHSLPQQTKKPESEGYLQEEKQKCYNDLLASAKKDLEVERQTITQLSFELSEFRRYEETQKEVHNLN  
QLLYSQRRADVQHLEDDRHKTEKIQKLREENDIARGKLEEEKKRSEELLSQVQFLYTSLLKQEEQTRVA  
LLEQQMQLACTLDFENEKLDQRHVQHQLLVILKELRKARNQITQLESKQLHEFAITEPLVTFQGETENRE  
KVAASPKSPTAALNESLVECPKCNIQYPATEHRDLLVHVEYCSK

TRTRPLEQKLISEEDLAANDILDYKDDDDKV

Tag:	C-Myc/DDK
Purity:	> 80% as determined by SDS-PAGE and Coomassie blue staining
Concentration:	>0.05 µg/µL as determined by microplate BCA method
Labeling Method:	Labeled with [U- <sup>13</sup> C <sub>6</sub> , <sup>15</sup> N <sub>4</sub> ]-L-Arginine and [U- <sup>13</sup> C <sub>6</sub> , <sup>15</sup> N <sub>2</sub> ]-L-Lysine
Buffer:	25 mM Tris-HCl, 100 mM glycine, pH 7.3
Storage:	Store at -80°C. Avoid repeated freeze-thaw cycles.
Stability:	Stable for 3 months from receipt of products under proper storage and handling conditions.
RefSeq:	<u><a href="#">NP_060601</a></u>
RefSeq Size:	2656
RefSeq ORF:	1392
Synonyms:	C10orf3; CT111; MARCH; URCC6



[View online »](#)

Locus ID: 55165

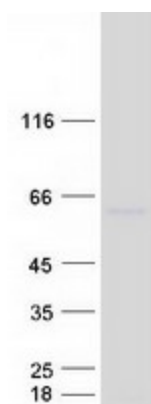
UniProt ID: [Q53EZ4](#)

Cytogenetics: 10q23.33

**Summary:** Plays a role in mitotic exit and cytokinesis (PubMed:16198290, PubMed:17853893). Recruits PDCD6IP and TSG101 to midbody during cytokinesis. Required for successful completion of cytokinesis (PubMed:17853893). Not required for microtubule nucleation (PubMed:16198290). Plays a role in the development of the brain and kidney (PubMed:28264986).[UniProtKB/Swiss-Prot Function]

**Protein Families:** Druggable Genome

### Product images:



Coomassie blue staining of purified CEP55 protein (Cat# [TP301052]). The protein was produced from HEK293T cells transfected with CEP55 cDNA clone (Cat# [RC201052]) using MegaTran 2.0 (Cat# [TT210002]).