

Product datasheet for PH301051

COMMD5 (NM_001081004) Human Mass Spec Standard

Product data:

Product Type:	Mass Spec Standards
Description:	COMMD5 MS Standard C13 and N15-labeled recombinant protein (NP_001074473)
Species:	Human
Expression Host:	HEK293
Expression cDNA Clone or AA Sequence:	RC201051
Predicted MW:	24.7 kDa
Protein Sequence:	>RC201051 protein sequence Red=Cloning site Green=Tags(s) MSAVGAATPYLHHPGDSHSGRVSFLGAQLPPEVAAMARLLGDLDRSTFRKLLKFFVSSSLQGEDCREAVQR LGVSANLPEEQLGALLAGMHTLLQQALRLPPTSLKPDTRDQLQELCIPQDLVGDLASVVFSGSRPLLDS VAQQQGAWLPHVADFRWRVDVAISTSALARSLQPSVLMQLKLSGDSAYRFEVPTAKFQELRYSVALVLKE MADLEKRCERLQD TRTRPLEQKLI SEEDLAANDILDYKDDDDKV
Tag:	C-Myc/DDK
Purity:	> 80% as determined by SDS-PAGE and Coomassie blue staining
Concentration:	>0.05 µg/µL as determined by microplate BCA method
Labeling Method:	Labeled with [U- 13C6, 15N4]-L-Arginine and [U- 13C6, 15N2]-L-Lysine
Buffer:	25 mM Tris-HCl, 100 mM glycine, pH 7.3
Storage:	Store at -80°C. Avoid repeated freeze-thaw cycles.
Stability:	Stable for 3 months from receipt of products under proper storage and handling conditions.
RefSeq:	NP_001074473
RefSeq Size:	1321
RefSeq ORF:	672
Synonyms:	HCARG; HT002
Locus ID:	28991
UniProt ID:	Q9GZQ3



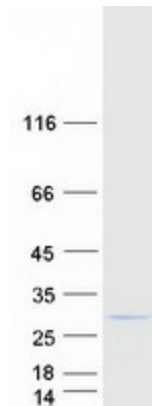
[View online »](#)

Cytogenetics: 8q24.3

Summary: May modulate activity of cullin-RING E3 ubiquitin ligase (CRL) complexes (PubMed:21778237). Negatively regulates cell proliferation. Negatively regulates cell cycle G2/M phase transition probably by transactivating p21/CDKN1A through the p53/TP53-independent signaling pathway. Involved in kidney proximal tubule morphogenesis (By similarity). Down-regulates activation of NF-kappa-B (PubMed:15799966).[UniProtKB/Swiss-Prot Function]

Protein Families: Druggable Genome

Product images:



Coomassie blue staining of purified COMMD5 protein (Cat# [TP301051]). The protein was produced from HEK293T cells transfected with COMMD5 cDNA clone (Cat# [RC201051]) using MegaTran 2.0 (Cat# [TT210002]).