

Product datasheet for PH301040

Hsp22 (HSPB8) (NM_014365) Human Mass Spec Standard

Product data:

Product Type:	Mass Spec Standards
Description:	HSPB8 MS Standard C13 and N15-labeled recombinant protein (NP_055180)
Species:	Human
Expression Host:	HEK293
Expression cDNA Clone or AA Sequence:	RC201040
Predicted MW:	21.6 kDa
Protein Sequence:	<p>>RC201040 protein sequence</p> <p>Red=Cloning site Green=Tags(s)</p> <p>MADGQMPFSCHYPSRLRRDPFRDSPLSSRLDDGFGMDPFPDDL TASWPDWALPRLSSAWPGTLRSGMVP RGPTATARFGVPAEGRTPPFPGEPPKVCNVHVSFKPEELMVKTGDGYVEVSGKHEEKQQEGGIVSKNFT KKIQLPAEVDPTVFASLSPEGLLIIEAPQVPYSTFGESSFNNELPQDSQEVTCT</p> <p>TRTRPLEQKLISEEDLAANDILDYKDDDDKV</p>
Tag:	C-Myc/DDK
Purity:	> 80% as determined by SDS-PAGE and Coomassie blue staining
Concentration:	>0.05 µg/µL as determined by microplate BCA method
Labeling Method:	Labeled with [U- ¹³ C ₆ , ¹⁵ N ₄]-L-Arginine and [U- ¹³ C ₆ , ¹⁵ N ₂]-L-Lysine
Buffer:	25 mM Tris-HCl, 100 mM glycine, pH 7.3
Storage:	Store at -80°C. Avoid repeated freeze-thaw cycles.
Stability:	Stable for 3 months from receipt of products under proper storage and handling conditions.
RefSeq:	<u>NP_055180</u>
RefSeq Size:	2056
RefSeq ORF:	588
Synonyms:	CMT2L; DHMN2; E2IG1; H11; HMN2; HMN2A; HSP22
Locus ID:	26353
UniProt ID:	<u>Q9UJY1</u>



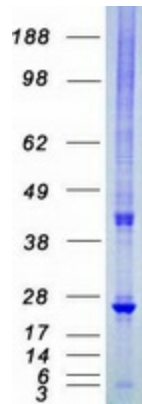
[View online »](#)

Cytogenetics: 12q24.23

Summary: The protein encoded by this gene belongs to the superfamily of small heat-shock proteins containing a conservative alpha-crystallin domain at the C-terminal part of the molecule. The expression of this gene is induced by estrogen in estrogen receptor-positive breast cancer cells, and this protein also functions as a chaperone in association with Bag3, a stimulator of macroautophagy. Thus, this gene appears to be involved in regulation of cell proliferation, apoptosis, and carcinogenesis, and mutations in this gene have been associated with different neuromuscular diseases, including Charcot-Marie-Tooth disease. [provided by RefSeq, Jul 2008]

Protein Families: Druggable Genome, Protein Kinase

Product images:



Coomassie blue staining of purified HSPB8 protein (Cat# [TP301040]). The protein was produced from HEK293T cells transfected with HSPB8 cDNA clone (Cat# [RC201040]) using MegaTran 2.0 (Cat# [TT210002]).