

Product datasheet for PH301036

FAM3C (NM_014888) Human Mass Spec Standard

Product data:

Product Type:	Mass Spec Standards
Description:	FAM3C MS Standard C13 and N15-labeled recombinant protein (NP_055703)
Species:	Human
Expression Host:	HEK293
Expression cDNA Clone or AA Sequence:	RC201036
Predicted MW:	24.7 kDa
Protein Sequence:	>RC201036 protein sequence Red=Cloning site Green=Tags(s) MRVAGAAKLVVAVAVFLLTFYVISQVFEIKMDASLGRLFARSALDTAARSTKPPRYKCGISKACPEKHFA FKMASGAANVVGPKICLEDNVLMSGVKNNVGRGINVALANGKTGEVLDTKYFDMWGGDVAPFIEFLKAIQ DGTIVLMGTYDDGATKLNDEARRLIADLGSTSITNLGFRDNWVFCGGKGIKTKSPFEQHIKNNKDTNKYE GWPEVVEMEGCIPIQKQD TRTRPLEQKLI SEEDLAANDILDYKDDDDKV
Tag:	C-Myc/DDK
Purity:	> 80% as determined by SDS-PAGE and Coomassie blue staining
Concentration:	>0.05 µg/µL as determined by microplate BCA method
Labeling Method:	Labeled with [U- 13C6, 15N4]-L-Arginine and [U- 13C6, 15N2]-L-Lysine
Buffer:	25 mM Tris-HCl, 100 mM glycine, pH 7.3
Storage:	Store at -80°C. Avoid repeated freeze-thaw cycles.
Stability:	Stable for 3 months from receipt of products under proper storage and handling conditions.
RefSeq:	NP_055703
RefSeq Size:	2552
RefSeq ORF:	681
Synonyms:	GS3786; ILEI
Locus ID:	10447
UniProt ID:	Q92520



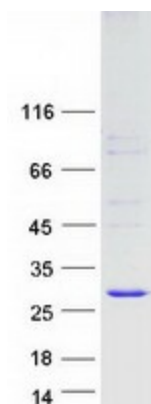
[View online »](#)

Cytogenetics: 7q31.31

Summary: This gene is a member of the family with sequence similarity 3 (FAM3) family and encodes a secreted protein with a GG domain. A change in expression of this protein has been noted in pancreatic cancer-derived cells. [provided by RefSeq, Mar 2010]

Protein Families: Secreted Protein, Transmembrane

Product images:



Coomassie blue staining of purified FAM3C protein (Cat# [TP301036]). The protein was produced from HEK293T cells transfected with FAM3C cDNA clone (Cat# [RC201036]) using MegaTran 2.0 (Cat# [TT210002]).