

Product datasheet for PH301021

Suppressor of Fused (SUFU) (NM_016169) Human Mass Spec Standard

Product data:

Product Type:	Mass Spec Standards
Description:	SUFU MS Standard C13 and N15-labeled recombinant protein (NP_057253)
Species:	Human
Expression Host:	HEK293
Expression cDNA Clone or AA Sequence:	RC201021
Predicted MW:	53.9 kDa
Protein Sequence:	>RC201021 protein sequence Red=Cloning site Green=Tags(s)

MAELRPSGAPGPTAPPAPGPTAPPAFASLFPPGLHAIYGECRRLYPDQPNPLQVTAIVKYWLGGPDLDY
VSMYRNVGSPSANIPEHWHYISFGLSDLYGDNRVHEFTGTDGPSGFGFELTFRLKRETGESAPPTWPAEL
MQGLARYVQSENTFCSGDHVSWHSPLDNSESRIQHMLLTEDPQMOPVQTPFGVVTFLLQIVGVCTEELHS
AQQWNGQGILELLRTVPIAGGPWLITDMRGETIFEIDPHLQERVDKGIETDGSNL SGVSAKCAWDDL SR
PPEDDEDSRSICIGTQPRRLSGKDTEQIRETLRRGLEINSKPVLPPIINPQRQNGLAHDRAPSRKDSLESD
SSTAIIPHELIRTRQLESVHLKFNQESGALIPLCRLGRLLHGRHFTYKSITGDMAITFVSTGVGAFATE
EHPYAAHGFWLQILLTEEFVEKMLEDLTSPPEEFKLPKEYSWPEKCLKVSIPLDVVFDSPH

TRTRPLEQKLI SEEDLAANDILDYKDDDDKV

Tag:	C-Myc/DDK
Purity:	> 80% as determined by SDS-PAGE and Coomassie blue staining
Concentration:	>0.05 µg/µL as determined by microplate BCA method
Labeling Method:	Labeled with [U- ¹³ C ₆ , ¹⁵ N ₄]-L-Arginine and [U- ¹³ C ₆ , ¹⁵ N ₂]-L-Lysine
Buffer:	25 mM Tris-HCl, 100 mM glycine, pH 7.3
Storage:	Store at -80°C. Avoid repeated freeze-thaw cycles.
Stability:	Stable for 3 months from receipt of products under proper storage and handling conditions.
RefSeq:	<u>NP_057253</u>
RefSeq Size:	4994
RefSeq ORF:	1452
Synonyms:	JBTS32; PRO1280; SUFUH; SUFUXL



[View online »](#)

Locus ID: 51684

UniProt ID: [Q9UMX1](#)

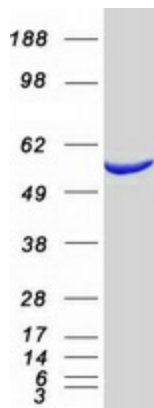
Cytogenetics: 10q24.32

Summary: The Hedgehog signaling pathway plays an important role in early human development. The pathway is a signaling cascade that plays a role in pattern formation and cellular proliferation during development. This gene encodes a negative regulator of the hedgehog signaling pathway. Defects in this gene are a cause of medulloblastoma. Alternative splicing results in multiple transcript variants.[provided by RefSeq, May 2010]

Protein Families: Druggable Genome, Transcription Factors

Protein Pathways: Basal cell carcinoma, Hedgehog signaling pathway, Pathways in cancer

Product images:



Coomassie blue staining of purified SUFU protein (Cat# [TP301021]). The protein was produced from HEK293T cells transfected with SUFU cDNA clone (Cat# [RC201021]) using MegaTran 2.0 (Cat# [TT210002]).