

Product datasheet for PH301014

CLDND1 (NM_019895) Human Mass Spec Standard

Product data:

Product Type:	Mass Spec Standards
Description:	CLDND1 MS Standard C13 and N15-labeled recombinant protein (NP_063948)
Species:	Human
Expression Host:	HEK293
Expression cDNA Clone or AA Sequence:	RC201014
Predicted MW:	28.6 kDa
Protein Sequence:	>RC201014 protein sequence Red=Cloning site Green=Tags(s) MDNRFATAFVIACVLSLISTIYMAASIGTDFWYERSPVQENSSDLNKSIDEDEFISDEADEKTYNDALFR YNGTVGLWRRICITIPKNMHWYSPPERTESFDVVTKCVSFTLTEQFMEKFVDPGNHMSGIDLLRRTLWRCQ FLLPFVSLGLMCFGALIGLCACICRSLYPTIATGILHLLAGLCTLGVSVCYVAGIELLHQKLELDPNVSG EFGWSFCLACVSAPLQFMASALFIWAAHTNRKEYTLMKAYRVA TRTRPLEQKLISEEDLAANDILDYKDDDDKV
Tag:	C-Myc/DDK
Purity:	> 80% as determined by SDS-PAGE and Coomassie blue staining
Concentration:	>0.05 µg/µL as determined by microplate BCA method
Labeling Method:	Labeled with [U- ¹³ C ₆ , ¹⁵ N ₄]-L-Arginine and [U- ¹³ C ₆ , ¹⁵ N ₂]-L-Lysine
Buffer:	25 mM Tris-HCl, 100 mM glycine, pH 7.3
Storage:	Store at -80°C. Avoid repeated freeze-thaw cycles.
Stability:	Stable for 3 months from receipt of products under proper storage and handling conditions.
RefSeq:	NP_063948
RefSeq Size:	2244
RefSeq ORF:	759
Synonyms:	C3orf4; GENX-3745; Z38
Locus ID:	56650
UniProt ID:	Q9NY35

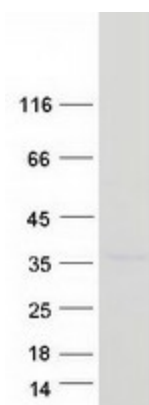


[View online »](#)

Cytogenetics: 3q11.2

Protein Families: Transmembrane

Product images:



Coomassie blue staining of purified CLDND1 protein (Cat# [TP301014]). The protein was produced from HEK293T cells transfected with CLDND1 cDNA clone (Cat# [RC201014]) using MegaTran 2.0 (Cat# [TT210002]).