

Product datasheet for PH301003

MSI2 (NM_138962) Human Mass Spec Standard

Product data:

Product Type:	Mass Spec Standards
Description:	MSI2 MS Standard C13 and N15-labeled recombinant protein (NP_620412)
Species:	Human
Expression Host:	HEK293
Expression cDNA Clone or AA Sequence:	RC201003
Predicted MW:	35.2 kDa
Protein Sequence:	>RC201003 protein sequence Red=Cloning site Green=Tags(s) MEANGSQGTSGSANDSQHDPGKMFIGGLSWQTSPLRKYFSKFGEIRECMVMDPTTKRSRGGFVTFADPASVDKVLGQPHHELDKIDPKVAFPRRAQPKMVTRTKKIFVGGLSANTVVEDVKQYFEQFGKVEDAMLMFDKTTNRHRGFGFVTFENEDVVEKVCIEHFHEINNKMVECKKAQPKVEMFPPGTRGRARGLPYTMDAFMLGMGMLGYPNFVATYGRGYPGFAPSYGYQFPGFPAAAYGPVAAAATAAARGSGSNPARPGGFPGANSPGPVADLYGPASQDSGVGNYSASAQPQSGFGHGIAGPLIATAFTNGYH SGPTRTRPLEQKLI SEEDLAANDILDYKDDDDKV
Tag:	C-Myc/DDK
Purity:	> 80% as determined by SDS-PAGE and Coomassie blue staining
Concentration:	>0.05 µg/µL as determined by microplate BCA method
Labeling Method:	Labeled with [U- ¹³ C ₆ , ¹⁵ N ₄]-L-Arginine and [U- ¹³ C ₆ , ¹⁵ N ₂]-L-Lysine
Buffer:	25 mM Tris-HCl, 100 mM glycine, pH 7.3
Storage:	Store at -80°C. Avoid repeated freeze-thaw cycles.
Stability:	Stable for 3 months from receipt of products under proper storage and handling conditions.
RefSeq:	<u>NP_620412</u>
RefSeq Size:	1581
RefSeq ORF:	984
Synonyms:	MSI2H
Locus ID:	124540



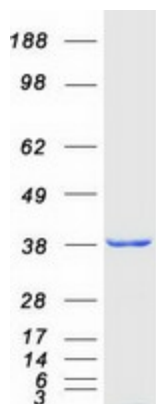
[View online »](#)

UniProt ID: [Q96DH6](#)

Cytogenetics: 17q22

Summary: This gene encodes an RNA-binding protein that is a member of the Musashi protein family. The encoded protein is transcriptional regulator that targets genes involved in development and cell cycle regulation. Mutations in this gene are associated with poor prognosis in certain types of cancers. This gene has also been shown to be rearranged in certain cancer cells. [provided by RefSeq, Apr 2016]

Product images:



Coomassie blue staining of purified MSI2 protein (Cat# [TP301003]). The protein was produced from HEK293T cells transfected with MSI2 cDNA clone (Cat# [RC201003]) using MegaTran 2.0 (Cat# [TT210002]).