

## Product datasheet for PH301002

### CDC37 (NM\_007065) Human Mass Spec Standard

#### Product data:

Product Type:	Mass Spec Standards
Description:	CDC37 MS Standard C13 and N15-labeled recombinant protein (NP_008996)
Species:	Human
Expression Host:	HEK293
Expression cDNA Clone or AA Sequence:	RC201002
Predicted MW:	44.5 kDa
Protein Sequence:	>RC201002 protein sequence Red=Cloning site Green=Tags(s)  MVDYSVWDHIEVSDDETHPNIDTASLFRWRHQARVERMEQFQKEKEELDRGCRECKRKVAECQRKLKE LEVAEGGKAELERLQAEAQQLRKEERSWEQKLEEMRKKEKSMPWNVDTL SKDGF SKSMVNTKPEKTEEDS EEVREQKHKTFVEKYEKQIKHFGMLRRWDSQKYL SDNVHLVCEETANYLVIWCIDLEVEEKALMEQVA HQTIVMQF ILELAKSLKVDPRACFRQFFTKIKTADRQYMEGFNDELEAFKERVGRAKLR IEKAMKEYEE EERKKRLGPGGLDPVEVYESLPEELQKCFDVKDVQMLQDAISKMDPTDAKYHMQRCIDSGLWVPNSKASE AKEGEEAGPGDPLLEAVPKTGDEKDVSV  TRTRPLEQKLI SEEDLAANDILDYKDDDDKV
Tag:	C-Myc/DDK
Purity:	> 80% as determined by SDS-PAGE and Coomassie blue staining
Concentration:	>0.05 µg/µL as determined by microplate BCA method
Labeling Method:	Labeled with [U- <sup>13</sup> C <sub>6</sub> , <sup>15</sup> N <sub>4</sub> ]-L-Arginine and [U- <sup>13</sup> C <sub>6</sub> , <sup>15</sup> N <sub>2</sub> ]-L-Lysine
Buffer:	25 mM Tris-HCl, 100 mM glycine, pH 7.3
Storage:	Store at -80°C. Avoid repeated freeze-thaw cycles.
Stability:	Stable for 3 months from receipt of products under proper storage and handling conditions.
RefSeq:	<u><a href="#">NP_008996</a></u>
RefSeq Size:	1693
RefSeq ORF:	1134
Synonyms:	P50CDC37
Locus ID:	11140



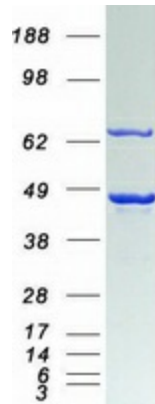
[View online »](#)

UniProt ID: [Q16543](#), [A0A024R7B7](#)

Cytogenetics: 19p13.2

**Summary:** The protein encoded by this gene is highly similar to Cdc 37, a cell division cycle control protein of *Sacchomyces cerevisiae*. This protein is a molecular chaperone with specific function in cell signal transduction. It has been shown to form complex with Hsp90 and a variety of protein kinases including CDK4, CDK6, SRC, RAF-1, MOK, as well as eIF2 alpha kinases. It is thought to play a critical role in directing Hsp90 to its target kinases. [provided by RefSeq, Jul 2008]

### Product images:



Coomassie blue staining of purified CDC37 protein (Cat# [TP301002]). The protein was produced from HEK293T cells transfected with CDC37 cDNA clone (Cat# [RC201002]) using MegaTran 2.0 (Cat# [TT210002]).