

Product datasheet for PH300995

Mutarotase (GALM) (NM_138801) Human Mass Spec Standard

Product data:

Product Type:	Mass Spec Standards
Description:	GALM MS Standard C13 and N15-labeled recombinant protein (NP_620156)
Species:	Human
Expression Host:	HEK293
Expression cDNA Clone or AA Sequence:	RC200995
Predicted MW:	37.8 kDa
Protein Sequence:	>RC200995 protein sequence Red =Cloning site Green =Tags(s)

MASVTRAVFGELPSGGTVEKFQLQSDLLRVDIISWGCTITALEVKDRQGRASDVVLGFAELEGYLQKQP
YFGAVIGRVANRIAKGTFKVDGKEYHLAINKEPNLSHGGVGRGFDKVLWTPRVL SNGVQFSRISPGEEGY
PGELKVVVYTYTL DGGELIVNYRAQASQATPVNLTNHSYFNLAGQASPINDEHVTIEADTYLPVDETLIP
TGEVAPVQGTAFDLRKPVELGKHLQDFHLNGFDHNFCLKGSKEKHF CARVHHAASGRVLEVYTTQPGVQF
YTGNFLLDGT LKGNKNGAVYPKHSFGFCLETQNPDAVNQPRFPPVLLRPGEEYDHTTWKFSVA

TRTRPLEQKLI SEEDLAANDILDYKDDDDKV

Tag:	C-Myc/DDK
Purity:	> 80% as determined by SDS-PAGE and Coomassie blue staining
Concentration:	>0.05 µg/µL as determined by microplate BCA method
Labeling Method:	Labeled with [U- ¹³ C ₆ , ¹⁵ N ₄]-L-Arginine and [U- ¹³ C ₆ , ¹⁵ N ₂]-L-Lysine
Buffer:	25 mM Tris-HCl, 100 mM glycine, pH 7.3
Storage:	Store at -80°C. Avoid repeated freeze-thaw cycles.
Stability:	Stable for 3 months from receipt of products under proper storage and handling conditions.
RefSeq:	<u>NP_620156</u>
RefSeq Size:	2483
RefSeq ORF:	1026
Synonyms:	BLOCK25; GALAC4; GLAT; HEL-S-63p; IBD1
Locus ID:	130589



[View online »](#)

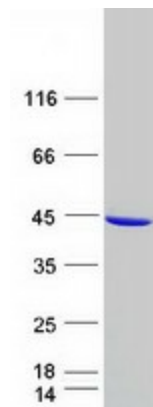
UniProt ID: [Q96C23](#), [A0A384MDW6](#)

Cytogenetics: 2p22.1

Summary: This gene encodes an enzyme that catalyzes the epimerization of hexose sugars such as glucose and galactose. The encoded protein is expressed in the cytoplasm and has a preference for galactose. The encoded protein may be required for normal galactose metabolism by maintaining the equilibrium of alpha and beta anomers of galactose.[provided by RefSeq, Mar 2009]

Protein Pathways: Glycolysis / Gluconeogenesis

Product images:



Coomassie blue staining of purified GALM protein (Cat# [TP300995]). The protein was produced from HEK293T cells transfected with GALM cDNA clone (Cat# [RC200995]) using MegaTran 2.0 (Cat# [TT210002]).