

Product datasheet for PH300993

MRI1 (NM_001031727) Human Mass Spec Standard

Product data:

Product Type:	Mass Spec Standards
Description:	MRI1 MS Standard C13 and N15-labeled recombinant protein (NP_001026897)
Species:	Human
Expression Host:	HEK293
Expression cDNA Clone or AA Sequence:	RC200993
Predicted MW:	39.1 kDa
Protein Sequence:	>RC200993 protein sequence Red=Cloning site Green=Tags(s)
	MTLEAIRYSRGSLSQILDQLLLPKQSRYEAVGSVHQAWAETRAMKVRGAPAIALVGCLSLAVELQAGAGGP GLAALVAFVRDKLSFLVTARPTAVNMARARLDADVAAREAEREGATEEAVRERVICCTEDMLEKDLRDN RSIGDLGARHLLERVAPSGGKVTVLTHCNTGALATAGYGTALGVIRSLHSLGRLEHAFCTETRPYNQGAR LTAFELVYEQIPATLITDSMVAAMAHRGVS AVVVGADRVVANGDTANKVGTYQLAIVAKHHGIPFYVAA PSSCDLRLLETGKEIIIEERPGQELTDVNGVRIAAPGIGVWNPADFVTPHDLITGGIITELGVFAPEELR TALTTTISRDTLDGPM
	TRTRPLEQKLI SEEDLAANDILDYKDDDDKV
Tag:	C-Myc/DDK
Purity:	> 80% as determined by SDS-PAGE and Coomassie blue staining
Concentration:	>0.05 µg/µL as determined by microplate BCA method
Labeling Method:	Labeled with [U- ¹³ C ₆ , ¹⁵ N ₄]-L-Arginine and [U- ¹³ C ₆ , ¹⁵ N ₂]-L-Lysine
Buffer:	25 mM Tris-HCl, 100 mM glycine, pH 7.3
Storage:	Store at -80°C. Avoid repeated freeze-thaw cycles.
Stability:	Stable for 3 months from receipt of products under proper storage and handling conditions.
RefSeq:	NP_001026897
RefSeq Size:	3177
RefSeq ORF:	1107
Synonyms:	M1Pi; MRDI; MTNA; Ypr118w
Locus ID:	84245



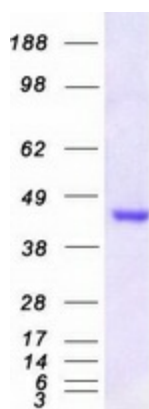
[View online »](#)

UniProt ID: [Q9BV20](#)

Cytogenetics: 19p13.13

Summary: This enzyme functions in the methionine salvage pathway by catalyzing the interconversion of methylthioribose-1-phosphate and methylthioribulose-1-phosphate. Elevated expression of the encoded protein is associated with metastatic melanoma and this protein promotes melanoma cell invasion independent of its enzymatic activity. Mutations in this gene may be associated with vanishing white matter disease (VMWD). [provided by RefSeq, Jul 2016]

Product images:



Coomassie blue staining of purified MRI1 protein (Cat# [TP300993]). The protein was produced from HEK293T cells transfected with MRI1 cDNA clone (Cat# [RC200993]) using MegaTran 2.0 (Cat# [TT210002]).