

## Product datasheet for PH300986

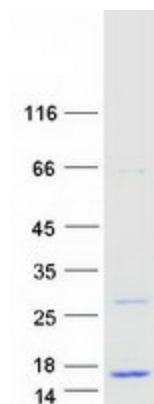
### LOC284912 (NM\_203375) Human Mass Spec Standard

#### Product data:

Product Type:	Mass Spec Standards
Description:	LOC284912 MS Standard C13 and N15-labeled recombinant protein (NP_976309)
Species:	Human
Expression Host:	HEK293
Expression cDNA Clone or AA Sequence:	RC200986
Predicted MW:	8.7 kDa
Protein Sequence:	<p>&gt;RC200986 protein sequence</p> <p>Red=Cloning site Green=Tags(s)</p> <p>MELLSPQSPFRVDRGEHLPFLVKGARYTLVPAGQEGGGQWRPLPGTTSPEDSSHLHRGQKKGAAALGMAV YPYNCQAHAP</p> <p>TRTRPLEQKLISEEDLAANDILDYKDDDDKV</p>
Tag:	C-Myc/DDK
Purity:	> 80% as determined by SDS-PAGE and Coomassie blue staining
Concentration:	>0.05 µg/µL as determined by microplate BCA method
Labeling Method:	Labeled with [U- 13C6, 15N4]-L-Arginine and [U- 13C6, 15N2]-L-Lysine
Buffer:	25 mM Tris-HCl, 100 mM glycine, pH 7.3
Storage:	Store at -80°C. Avoid repeated freeze-thaw cycles.
Stability:	Stable for 3 months from receipt of products under proper storage and handling conditions.
RefSeq:	<u><a href="#">NP_976309</a></u>
RefSeq Size:	899
RefSeq ORF:	240
Synonyms:	MGC3170
Locus ID:	284912
Cytogenetics:	22q12.3


[View online »](#)

## Product images:



Coomassie blue staining of purified LOC284912 protein (Cat# [TP300986]). The protein was produced from HEK293T cells transfected with LOC284912 cDNA clone (Cat# [RC200986]) using MegaTran 2.0 (Cat# [TT210002]).