

Product datasheet for PH300974

SFXN3 (NM_030971) Human Mass Spec Standard

Product data:

Product Type:	Mass Spec Standards
Description:	SFXN3 MS Standard C13 and N15-labeled recombinant protein (NP_112233)
Species:	Human
Expression Host:	HEK293
Expression cDNA Clone or AA Sequence:	RC200974
Predicted MW:	36 kDa
Protein Sequence:	>RC200974 protein sequence Red=Cloning site Green=Tags(s) MESKMGELPLDINIQEPRWDQSTFLGRARHFFVTDPNLLLGAQLEASRNIVQNYRAGVVTPGITEDQ LWRAKYVYDSAFHPDTGEKVVLIGRMSAQVPMNMTITGCMLTFYRKTPTVVFWQWVNFNAIVNYSNRS GDTPTIVRQLGTAYVSATTGAVATALGLKSLTKHLPLLVGRFVFAAVAAANCINIPLMRQRELQVGIPV ADEAGQRLGYSVTAAKQGIFQVVISRICMAIPAMAIPPLIMDTLEKKDFLKRPPWLGAPLQVGLVGFCLV FATPLCCALFPQKSSIHISNLEPELRAQIHEQNPSVEVVYNNKGL TRTRPLEQKLISEEDLAANDILDYKDDDDKV
Tag:	C-Myc/DDK
Purity:	> 80% as determined by SDS-PAGE and Coomassie blue staining
Concentration:	>0.05 µg/µL as determined by microplate BCA method
Labeling Method:	Labeled with [U- ¹³ C ₆ , ¹⁵ N ₄]-L-Arginine and [U- ¹³ C ₆ , ¹⁵ N ₂]-L-Lysine
Buffer:	25 mM Tris-HCl, 100 mM glycine, pH 7.3
Storage:	Store at -80°C. Avoid repeated freeze-thaw cycles.
Stability:	Stable for 3 months from receipt of products under proper storage and handling conditions.
RefSeq:	NP_112233
RefSeq Size:	3129
RefSeq ORF:	975
Synonyms:	BA108L7.2; SFX3; SLC56A3
Locus ID:	81855



[View online »](#)

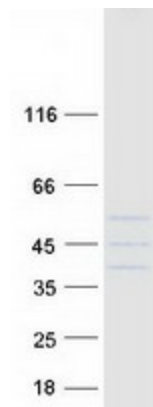
UniProt ID: [Q9BWM7](#), [A0A1P0AYU5](#)

Cytogenetics: 10q24.31

Summary: Mitochondrial serine transporter that mediates transport of serine into mitochondria, an important step of the one-carbon metabolism pathway (PubMed:30442778). Mitochondrial serine is converted to glycine and formate, which then exits to the cytosol where it is used to generate the charged folates that serve as one-carbon donors (PubMed:30442778).
[UniProtKB/Swiss-Prot Function]

Protein Families: Transmembrane

Product images:



Coomassie blue staining of purified SFXN3 protein (Cat# [TP300974]). The protein was produced from HEK293T cells transfected with SFXN3 cDNA clone (Cat# [RC200974]) using MegaTran 2.0 (Cat# [TT210002]).