

## Product datasheet for PH300969

### CPLX1 (NM\_006651) Human Mass Spec Standard

#### Product data:

Product Type:	Mass Spec Standards
Description:	CPLX1 MS Standard C13 and N15-labeled recombinant protein (NP_006642)
Species:	Human
Expression Host:	HEK293
Expression cDNA Clone or AA Sequence:	RC200969
Predicted MW:	15 kDa
Protein Sequence:	>RC200969 protein sequence Red=Cloning site Green=Tags(s)  MEFVMKQALGGATKDMGKMLGGDEEKDPDAAKKEEERQEALRQAEERKAKYAKMEAEEREAVRQGIRDKY GIKKKEEREAEAQAAMEANSEGSLTRPKKAIPPGCGDEVVEEDESILDTVIKYLPGPLQDMLKK  TRTRPLEQKLISEEDLAANDILDYKDDDDKV
Tag:	C-Myc/DDK
Purity:	> 80% as determined by SDS-PAGE and Coomassie blue staining
Concentration:	>0.05 µg/µL as determined by microplate BCA method
Labeling Method:	Labeled with [U- 13C6, 15N4]-L-Arginine and [U- 13C6, 15N2]-L-Lysine
Buffer:	25 mM Tris-HCl, 100 mM glycine, pH 7.3
Storage:	Store at -80°C. Avoid repeated freeze-thaw cycles.
Stability:	Stable for 3 months from receipt of products under proper storage and handling conditions.
RefSeq:	<a href="#">NP_006642</a>
RefSeq Size:	2200
RefSeq ORF:	402
Synonyms:	CPX-I; CPX1; DEE63; EIEE63
Locus ID:	10815
UniProt ID:	<a href="#">O14810</a>
Cytogenetics:	4p16.3

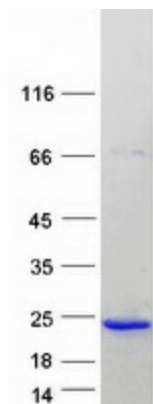


[View online »](#)

**Summary:** Proteins encoded by the complexin/synaphin gene family are cytosolic proteins that function in synaptic vesicle exocytosis. These proteins bind syntaxin, part of the SNAP receptor. The protein product of this gene binds to the SNAP receptor complex and disrupts it, allowing transmitter release. [provided by RefSeq, Jul 2008]

**Protein Families:** Druggable Genome

**Product images:**



Coomassie blue staining of purified CPLX1 protein (Cat# [TP300969]). The protein was produced from HEK293T cells transfected with CPLX1 cDNA clone (Cat# [RC200969]) using MegaTran 2.0 (Cat# [TT210002]).