

## Product datasheet for PH300958

### PDCL3 (NM\_024065) Human Mass Spec Standard

#### Product data:

Product Type:	Mass Spec Standards
Description:	PDCL3 MS Standard C13 and N15-labeled recombinant protein (NP_076970)
Species:	Human
Expression Host:	HEK293
Expression cDNA Clone or AA Sequence:	RC200958
Predicted MW:	27.6 kDa
Protein Sequence:	>RC200958 protein sequence <span style="color: red;">Red</span> =Cloning site <span style="color: green;">Green</span> =Tags(s)

MQDPNADTEWNDILRKKGILPPKESLKELEEEAEEEQRILQQSVVKTYEDMTLEELEDHEDEFNEEDERA  
 IEMYRRRLAEWKATKLKNKFGEVLEISGKDYVQEVTKAGEGLWVILHLKQGIPLCALINQHLSGLARK  
 FPDVKFIKAISTTCIPNYPDRNLPTIFVYLEGDIKAQFIGPLVFGGMNLTRELEWKLSGSAIMTDLEE  
 NPKKPIEDVLLSSVRRSVLMKRDSDEGD

TRTRPLEQKLISEEDLANDILDYKDDDDKV

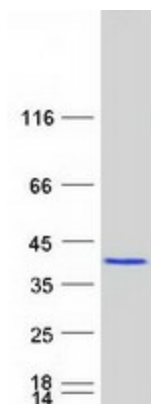
Tag:	C-Myc/DDK
Purity:	> 80% as determined by SDS-PAGE and Coomassie blue staining
Concentration:	>0.05 µg/µL as determined by microplate BCA method
Labeling Method:	Labeled with [U- <sup>13</sup> C <sub>6</sub> , <sup>15</sup> N <sub>4</sub> ]-L-Arginine and [U- <sup>13</sup> C <sub>6</sub> , <sup>15</sup> N <sub>2</sub> ]-L-Lysine
Buffer:	25 mM Tris-HCl, 100 mM glycine, pH 7.3
Storage:	Store at -80°C. Avoid repeated freeze-thaw cycles.
Stability:	Stable for 3 months from receipt of products under proper storage and handling conditions.
RefSeq:	<u><a href="#">NP_076970</a></u>
RefSeq Size:	1086
RefSeq ORF:	717
Synonyms:	HTPHLP; PHLP2A; PHLP3; VIAF; VIAF1
Locus ID:	79031
UniProt ID:	<u><a href="#">Q9H2J4</a></u>


[View online »](#)

**Cytogenetics:** 2q11.2

**Summary:** This gene encodes a member of the phosducin-like protein family and is a putative modulator of heterotrimeric G proteins. The protein shares extensive amino acid sequence homology with phosducin. Members of the phosducin-like protein family have been shown to bind to the beta-gamma subunits of G proteins. [provided by RefSeq, Jul 2008]

**Product images:**



Coomassie blue staining of purified PDCL3 protein (Cat# [TP300958]). The protein was produced from HEK293T cells transfected with PDCL3 cDNA clone (Cat# [RC200958]) using MegaTran 2.0 (Cat# [TT210002]).