

## Product datasheet for PH300956

### EFHD1 (NM\_025202) Human Mass Spec Standard

#### Product data:

Product Type:	Mass Spec Standards
Description:	EFHD1 MS Standard C13 and N15-labeled recombinant protein (NP_079478)
Species:	Human
Expression Host:	HEK293
Expression cDNA Clone or AA Sequence:	RC200956
Predicted MW:	26.9 kDa
Protein Sequence:	>RC200956 protein sequence <span style="color: red;">Red</span> =Cloning site <span style="color: green;">Green</span> =Tags(s)

MASEELACKLERRLRREEAESGPQLAPLGAPAPEPKPEPEPPARAPTASADAELSAQLSRRLDINEGAA  
 RPRRCRVFNPYTEFPEFSRRLIKDLESMFKLYDAGRDFIDLMELKLMMEKLGAPQTHLGLKSMIKEVDE  
 DFDGKLSFRELLIFHKAAGELQEDSGLMALAKLSEIDVALEGVKGAKNFFEAKVQALSSASKFEAEK  
 AEQDERKREEERRLRQAQFQKLKANFNT

TRTRPLEQKLISEEDLAANDILDYKDDDDKV

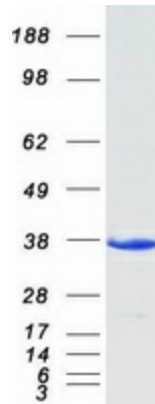
Tag:	C-Myc/DDK
Purity:	> 80% as determined by SDS-PAGE and Coomassie blue staining
Concentration:	>0.05 µg/µL as determined by microplate BCA method
Labeling Method:	Labeled with [U- <sup>13</sup> C <sub>6</sub> , <sup>15</sup> N <sub>4</sub> ]-L-Arginine and [U- <sup>13</sup> C <sub>6</sub> , <sup>15</sup> N <sub>2</sub> ]-L-Lysine
Buffer:	25 mM Tris-HCl, 100 mM glycine, pH 7.3
Storage:	Store at -80°C. Avoid repeated freeze-thaw cycles.
Stability:	Stable for 3 months from receipt of products under proper storage and handling conditions.
RefSeq:	<a href="#">NP_079478</a>
RefSeq Size:	2000
RefSeq ORF:	717
Synonyms:	MST133; MSTP133; PP3051; SWS2
Locus ID:	80303
UniProt ID:	<a href="#">Q9BUP0</a>


[View online »](#)

**Cytogenetics:** 2q37.1

**Summary:** This gene encodes a member of the EF-hand super family of calcium binding proteins, which are involved in a variety of cellular processes including mitosis, synaptic transmission, and cytoskeletal rearrangement. The protein encoded by this gene is composed of an N-terminal disordered region, proline-rich elements, two EF-hands, and a C-terminal coiled-coil domain. This protein has been shown to associate with the mitochondrial inner membrane, and in HeLa cells, acts as a novel mitochondrial calcium ion sensor for mitochondrial flash activation. Alternative splicing results in multiple transcript variants. [provided by RefSeq, Jul 2016]

### Product images:



Coomassie blue staining of purified EFHD1 protein (Cat# [TP300956]). The protein was produced from HEK293T cells transfected with EFHD1 cDNA clone (Cat# [RC200956]) using MegaTran 2.0 (Cat# [TT210002]).