

Product datasheet for PH300948

MEPCE (NM_019606) Human Mass Spec Standard

Product data:

Product Type:	Mass Spec Standards
Description:	MEPCE MS Standard C13 and N15-labeled recombinant protein (NP_062552)
Species:	Human
Expression Host:	HEK293
Expression cDNA Clone or AA Sequence:	RC200948
Predicted MW:	74.4 kDa
Protein Sequence:	>RC200948 protein sequence Red=Cloning site Green=Tags(s)

MIEMAAEKPFLLVAPPPPLKDESGGGGPTVPPHQEAASGELRGGTERGPGRCAPSAGSPA AAVGRES P
GAAATSSSGPQAQQHRGGGPQAQSHGEARLSDPPGRAAPPDVGEERRGGGTELGPAPPRPRNGYQPHR
PPGGGGGKRRNSCNVGGGGGFKHPAFKRRRVNSDCDSVLPNSFLLGGNIFDPLNLSLLDEEVSRTL N
AETPKSSPLPAKGRDPVEILIPKIDITDPLSLNTCTDEGHVVLASPLKTRKRHRHRGQHHQQQAAGGSE
SHPVPPTAPLTPLHGEASQQPRHRGQNRDAPQPYELNTAINCRDEVVSPALQGPSGSLSAPPAAS
VISAPSSSSRHRKRRRTSSKSEAGARGGGQGSKEKGRGSWGRHHHHHPLAAGFKKQQRKFQYGN YCK
YYGYRNPSCEDGRLRVLKPEWFRGRDVLDLGCNVGHLTLSIACKWGPSRMVGLDIDSRLIHSARQNI RH Y
LSEELRLPPQTLLEGDPGAEEGEETTTVRKRSCFPASLTASRGPIAAPQVPLDGADTSVFPNNVVFVTGNY
VLDRDDLV EAQTPEYDVVLCLSLTKWVHLNWGDEGLKRMFRIYRHLRPGGILVLEPQPWSSYGRKRTLT
ETIYKNYYRIQLKPEQFSSYLTPDVGFSSEYELVATPHNTSKGFQRPVYLFHKARSPSH

TRTRPLEQKLI SEEDLAANDILDYKDDDDKV

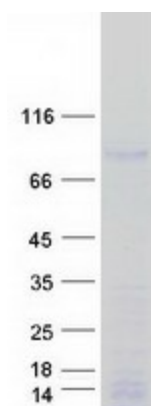
Tag:	C-Myc/DDK
Purity:	> 80% as determined by SDS-PAGE and Coomassie blue staining
Concentration:	>0.05 µg/µL as determined by microplate BCA method
Labeling Method:	Labeled with [U- 13C6, 15N4]-L-Arginine and [U- 13C6, 15N2]-L-Lysine
Buffer:	25 mM Tris-HCl, 100 mM glycine, pH 7.3
Storage:	Store at -80°C. Avoid repeated freeze-thaw cycles.
Stability:	Stable for 3 months from receipt of products under proper storage and handling conditions.
RefSeq:	NP_062552
RefSeq Size:	3047



[View online »](#)

RefSeq ORF:	2067
Synonyms:	BCDIN3
Locus ID:	56257
UniProt ID:	Q7L2J0
Cytogenetics:	7q22.1
Summary:	S-adenosyl-L-methionine-dependent methyltransferase that adds a methylphosphate cap at the 5'-end of 7SK snRNA, leading to stabilize it.[UniProtKB/Swiss-Prot Function]
Protein Families:	Druggable Genome

Product images:



Coomassie blue staining of purified MEPCE protein (Cat# [TP300948]). The protein was produced from HEK293T cells transfected with MEPCE cDNA clone (Cat# [RC200948]) using MegaTran 2.0 (Cat# [TT210002]).