

Product datasheet for PH300936

NUDT21 (NM_007006) Human Mass Spec Standard

Product data:

Product Type:	Mass Spec Standards
Description:	NUDT21 MS Standard C13 and N15-labeled recombinant protein (NP_008937)
Species:	Human
Expression Host:	HEK293
Expression cDNA Clone or AA Sequence:	RC200936
Predicted MW:	26.2 kDa
Protein Sequence:	>RC200936 protein sequence Red =Cloning site Green =Tags(s) MSVVPNRSQTGWPRGVTQFGNKYIQQTKPLTLERTINLYPLTNYTFGTKEPLYEKDSSVAARFQRMREE FDKIGMRRTVEGLIVHEHRLPHVLLLQLGTTFFKLPGGELNPGEDEVEGLKRLMTEILGRQDGVLDQDW IDDCIGNWWRPNFEPQYPYIPAHITKPKHEKKLFLVQLQEALFAVPKNYKLVAAPLFELYDNAPGYGP IISLPLQLLSRFNFIYN TRTRPLEQKLI SEEDLAANDILDYKDDDDKV
Tag:	C-Myc/DDK
Purity:	> 80% as determined by SDS-PAGE and Coomassie blue staining
Concentration:	>0.05 µg/µL as determined by microplate BCA method
Labeling Method:	Labeled with [U- ¹³ C ₆ , ¹⁵ N ₄]-L-Arginine and [U- ¹³ C ₆ , ¹⁵ N ₂]-L-Lysine
Buffer:	25 mM Tris-HCl, 100 mM glycine, pH 7.3
Storage:	Store at -80°C. Avoid repeated freeze-thaw cycles.
Stability:	Stable for 3 months from receipt of products under proper storage and handling conditions.
RefSeq:	NP_008937
RefSeq Size:	4407
RefSeq ORF:	681
Synonyms:	CFIM25; CPSF5
Locus ID:	11051
UniProt ID:	O43809 , A0A024R6W2

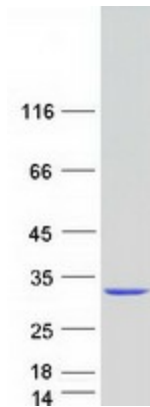


[View online »](#)

Cytogenetics: 16q13

Summary: The protein encoded by this gene is one subunit of a cleavage factor required for 3' RNA cleavage and polyadenylation processing. The interaction of the protein with the RNA is one of the earliest steps in the assembly of the 3' end processing complex and facilitates the recruitment of other processing factors. This gene encodes the 25kD subunit of the protein complex, which is composed of four polypeptides. [provided by RefSeq, Jul 2008]

Product images:



Coomassie blue staining of purified NUDT21 protein (Cat# [TP300936]). The protein was produced from HEK293T cells transfected with NUDT21 cDNA clone (Cat# [RC200936]) using MegaTran 2.0 (Cat# [TT210002]).