

Product datasheet for PH300933

RUVBL2 (NM_006666) Human Mass Spec Standard

Product data:

| | |
|---------------------------------------|--|
| Product Type: | Mass Spec Standards |
| Description: | RUVBL2 MS Standard C13 and N15-labeled recombinant protein (NP_006657) |
| Species: | Human |
| Expression Host: | HEK293 |
| Expression cDNA Clone or AA Sequence: | RC200933 |
| Predicted MW: | 51.2 kDa |
| Protein Sequence: | >RC200933 protein sequence Red=Cloning site Green=Tags(s) |

MATVTATTKVPEIRDVTRIERIGAHSHIRGLDDALEPRQASQGMVQQLAARRAAGVVLEMIREGKIAG
RAVLIAGQPGTGKTAIAMGMAQALGPDTPFTAIAGSEIFSLEMSKTEAL TQAFRRSIGVRIKEETEIEG
EVVEIQIDRPATGTGSKVGKLTLLKTTMETIYDLGTKMIESLTKDKVQAGDVITIDKATGKISKLGRSFT
RARDYDAMGSQTKFVQCPDGELQKRKEVVHTVSLHEIDVINSRTQGFLALFSGDTGEIKSEVREQINAKV
AEWREEGKAEIIPGVLFIDEVHMLDIESFSFLNRALES DMAPVLIMATNRGITRIRGTSYQSPHGIPIDL
LDRLLIVSTTPYSEKDTKQILRIRCEEEDVEMSEDAYTVL TRIGLETSLRYAIQLITAASLVCRKRKGTE
VQVDDIKRVYSLFLDESRSTQYMKEYQDAFLFNELKGETMDTS

TRTRPLEQKLI SEEDLAANDILDYKDDDDKV

| | |
|------------------|--|
| Tag: | C-Myc/DDK |
| Purity: | > 80% as determined by SDS-PAGE and Coomassie blue staining |
| Concentration: | >0.05 µg/µL as determined by microplate BCA method |
| Labeling Method: | Labeled with [U- ¹³ C ₆ , ¹⁵ N ₄]-L-Arginine and [U- ¹³ C ₆ , ¹⁵ N ₂]-L-Lysine |
| Buffer: | 25 mM Tris-HCl, 100 mM glycine, pH 7.3 |
| Storage: | Store at -80°C. Avoid repeated freeze-thaw cycles. |
| Stability: | Stable for 3 months from receipt of products under proper storage and handling conditions. |
| RefSeq: | <u>NP_006657</u> |
| RefSeq Size: | 1488 |
| RefSeq ORF: | 1389 |
| Synonyms: | CGI-46; ECP-51; ECP51; INO80J; REPTIN; RVB2; TAP54-beta; TIH2; TIP48; TIP49B |



[View online »](#)

Locus ID: 10856

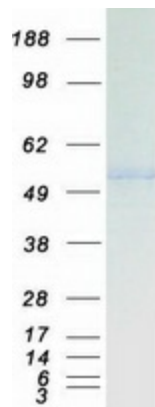
UniProt ID: [Q9Y230](#)

Cytogenetics: 19q13.33

Summary: This gene encodes the second human homologue of the bacterial RuvB gene. Bacterial RuvB protein is a DNA helicase essential for homologous recombination and DNA double-strand break repair. Functional analysis showed that this gene product has both ATPase and DNA helicase activities. This gene is physically linked to the CGB/LHB gene cluster on chromosome 19q13.3, and is very close (55 nt) to the LHB gene, in the opposite orientation. [provided by RefSeq, Jul 2008]

Protein Families: Transcription Factors

Product images:



Coomassie blue staining of purified RUVBL2 protein (Cat# [TP300933]). The protein was produced from HEK293T cells transfected with RUVBL2 cDNA clone (Cat# [RC200933]) using MegaTran 2.0 (Cat# [TT210002]).