

## Product datasheet for PH300926

### MAT2A (NM\_005911) Human Mass Spec Standard

#### Product data:

Product Type:	Mass Spec Standards
Description:	MAT2A MS Standard C13 and N15-labeled recombinant protein (NP_005902)
Species:	Human
Expression Host:	HEK293
Expression cDNA Clone or AA Sequence:	RC200926
Predicted MW:	43.7 kDa
Protein Sequence:	>RC200926 protein sequence Red=Cloning site Green=Tags(s)
	MNGQLNGFHEAFIEEGTFLFTSESVGEGHPDKICDQISDAVLD AHLQQDPDAKVACETVAKTGMILLAGE ITSRAAVDYQKVVREAVKHIGYDDSSKGFYKTCNVLVALEQQSPDIAQGVHLDRNEEDIGAGDQGLMFG YATDETEECMPLTIVLAHKLNAKLAELRRNGTLPWLRPDSKTQVTVQYMQDRGAVLPIRVHTIVISVQHD EEVCLDEM DALKEKVIKAVVPAKYLD EDTIYHLQPSGRFVIGGPQGDAGLTGRKIIIVDTYGGWGAHGGG AFSGKDYTKVDRSAAYAARWVAKSLVKGGLCRRVLVQVSYAIGVSHPLSISIFHYGTSQKSERELLEIVK KNFDLRPGVIVRDLDLKKPIYQRTAAYGHFGRDSFPWEVPKLLKY
	TRTRPLEQKLI SEEDLAANDILDYKDDDDKV
Tag:	C-Myc/DDK
Purity:	> 80% as determined by SDS-PAGE and Coomassie blue staining
Concentration:	>0.05 µg/µL as determined by microplate BCA method
Labeling Method:	Labeled with [U- <sup>13</sup> C <sub>6</sub> , <sup>15</sup> N <sub>4</sub> ]-L-Arginine and [U- <sup>13</sup> C <sub>6</sub> , <sup>15</sup> N <sub>2</sub> ]-L-Lysine
Buffer:	25 mM Tris-HCl, 100 mM glycine, pH 7.3
Storage:	Store at -80°C. Avoid repeated freeze-thaw cycles.
Stability:	Stable for 3 months from receipt of products under proper storage and handling conditions.
RefSeq:	<u>NP_005902</u>
RefSeq Size:	3022
RefSeq ORF:	1185
Synonyms:	MATA2; MATII; SAMS2
Locus ID:	4144



[View online »](#)

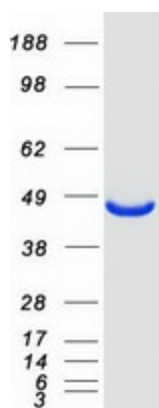
UniProt ID: [P31153](#), [A0A140VJP5](#)

Cytogenetics: 2p11.2

Summary: The protein encoded by this gene catalyzes the production of S-adenosylmethionine (AdoMet) from methionine and ATP. AdoMet is the key methyl donor in cellular processes. [provided by RefSeq, Jun 2011]

Protein Pathways: Cysteine and methionine metabolism, Metabolic pathways, Selenoamino acid metabolism

### Product images:



Coomassie blue staining of purified MAT2A protein (Cat# [TP300926]). The protein was produced from HEK293T cells transfected with MAT2A cDNA clone (Cat# [RC200926]) using MegaTran 2.0 (Cat# [TT210002]).