

Product datasheet for PH300921

CBARA1 (MICU1) (NM_006077) Human Mass Spec Standard

Product data:

Product Type:	Mass Spec Standards
Description:	CBARA1 MS Standard C13 and N15-labeled recombinant protein (NP_006068)
Species:	Human
Expression Host:	HEK293
Expression cDNA Clone or AA Sequence:	RC200921
Predicted MW:	54.4 kDa
Protein Sequence:	>RC200921 protein sequence Red=Cloning site Green=Tags(s)

MFRLNSLSALAEAVGSRWYHGGSQPIQIRRRLLMVAFLGASAVTASTGLLWKRAHAESPPCVDNLKSDI
GDKGKNKDEGDVCNHEKKTADLAPHPEEKKKRSGFRDRKVMYENRIRAYSTPDKIFRYFATLKVISEP
GEAEVFMTPEDFVRSITPNEKQPEHLGLDQYIIKRFDGKKSQEREKFADEGSIFYTLGECGLISFSDYI
FLTTVLSTPQRNFEIAFKMFDLNGDGEVDMEEFEQVQSIIRSQTSMGMRHRDRPTTGNTLKSGLCSALTT
YFFGADLKGKLTIKNFLEFQRKLQHDVLKLEFERHDPVDGRITERQFGGMLLAYSGVQSKLTAMQRQLK
KHFKEGKGLTFQEVENFFTLKNINDVDTALSFYHMAGASLDKVTMQQVARTVAKVELSDHVCVVFFALF
DCDNGELSNKEFVSIMKQRLMRGLEKPKDMGFTRLMQAMWKAQETAWDFALPKQ

TRTRPLEQKLISEEDLAANDILDYKDDDDKV

Tag:	C-Myc/DDK
Purity:	> 80% as determined by SDS-PAGE and Coomassie blue staining
Concentration:	>0.05 µg/µL as determined by microplate BCA method
Labeling Method:	Labeled with [U- ¹³ C ₆ , ¹⁵ N ₄]-L-Arginine and [U- ¹³ C ₆ , ¹⁵ N ₂]-L-Lysine
Buffer:	25 mM Tris-HCl, 100 mM glycine, pH 7.3
Storage:	Store at -80°C. Avoid repeated freeze-thaw cycles.
Stability:	Stable for 3 months from receipt of products under proper storage and handling conditions.
RefSeq:	<u>NP_006068</u>
RefSeq Size:	2506
RefSeq ORF:	1428
Synonyms:	ara CALC; CALC; CBARA1; EFHA3; MPXPS



[View online »](#)

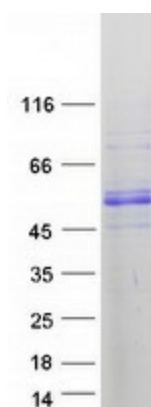
Locus ID: 10367

UniProt ID: [Q9BPX6](#)

Cytogenetics: 10q22.1

Summary: This gene encodes an essential regulator of mitochondrial Ca²⁺ uptake under basal conditions. The encoded protein interacts with the mitochondrial calcium uniporter, a mitochondrial inner membrane Ca²⁺ channel, and is essential in preventing mitochondrial Ca²⁺ overload, which can cause excessive production of reactive oxygen species and cell stress. Alternatively spliced transcript variants encoding different isoforms have been described. [provided by RefSeq, Mar 2013]

Product images:



Coomassie blue staining of purified MICU1 protein (Cat# [TP300921]). The protein was produced from HEK293T cells transfected with MICU1 cDNA clone (Cat# [RC200921]) using MegaTran 2.0 (Cat# [TT210002]).