

Product datasheet for PH300902

RhoGDI (ARHGDI) (NM_004309) Human Mass Spec Standard

Product data:

Product Type:	Mass Spec Standards
Description:	ARHGDI MS Standard C13 and N15-labeled recombinant protein (NP_004300)
Species:	Human
Expression Host:	HEK293
Expression cDNA Clone or AA Sequence:	RC200902
Predicted MW:	23.2 kDa
Protein Sequence:	>RC200902 protein sequence Red=Cloning site Green=Tags(s) MAEQEPTAEQLAQIAAENEDEHSVNYKPPAQKSIQEIQELDKDDESLRKYKEALLGRVAVSADPNV PNV VVTGLTLVCSSAPGPLELDLTGDLESFKKQSFVLKEGVEYRIKISFRVNREIVSGMKYIQHTYRKGVKID KTDYMGVSGPRAEYEFLLTPVEEAPKGMGLARGSYSIKSRFTDDDKTDHLSWEWNLTIKDKWD TRTRPLEQKLISEEDLAANDILDYKDDDDKV
Tag:	C-Myc/DDK
Purity:	> 80% as determined by SDS-PAGE and Coomassie blue staining
Concentration:	>0.05 µg/µL as determined by microplate BCA method
Labeling Method:	Labeled with [U- 13C6, 15N4]-L-Arginine and [U- 13C6, 15N2]-L-Lysine
Buffer:	25 mM Tris-HCl, 100 mM glycine, pH 7.3
Storage:	Store at -80°C. Avoid repeated freeze-thaw cycles.
Stability:	Stable for 3 months from receipt of products under proper storage and handling conditions.
RefSeq:	<u>NP_004300</u>
RefSeq Size:	1920
RefSeq ORF:	612
Synonyms:	GDIA1; HEL-S-47e; NPHS8; RHOGDI; RHOGDI-1
Locus ID:	396
UniProt ID:	<u>P52565</u> , <u>V9HWE8</u>



[View online »](#)

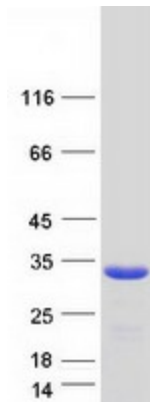
Cytogenetics: 17q25.3

Summary: This gene encodes a protein that plays a key role in the regulation of signaling through Rho GTPases. The encoded protein inhibits the disassociation of Rho family members from GDP (guanine diphosphate), thereby maintaining these factors in an inactive state. Activity of this protein is important in a variety of cellular processes, and expression of this gene may be altered in tumors. Mutations in this gene have been found in individuals with nephrotic syndrome, type 8. Alternate splicing results in multiple transcript variants. [provided by RefSeq, Jul 2014]

Protein Families: Druggable Genome

Protein Pathways: Neurotrophin signaling pathway

Product images:



Coomassie blue staining of purified ARHGDI protein (Cat# [TP300902]). The protein was produced from HEK293T cells transfected with ARHGDI cDNA clone (Cat# [RC200902]) using MegaTran 2.0 (Cat# [TT210002]).