

Product datasheet for PH300893

OTUD5 (NM_017602) Human Mass Spec Standard

Product data:

Product Type:	Mass Spec Standards
Description:	OTUD5 MS Standard C13 and N15-labeled recombinant protein (NP_060072)
Species:	Human
Expression Host:	HEK293
Expression cDNA Clone or AA Sequence:	RC200893
Predicted MW:	60.4 kDa
Protein Sequence:	>RC200893 representing NM_017602 Red=Cloning site Green=Tags(s)

MTILPKKKPPPDADPANEPMPMPAPRRGGVGVGGGTGVGGDRDRDSGVVGARPRASPPQGP
LPGPPGALHRWALAVPPGAVAGPRPQQASPPPCGGPGGGPGDALGAAAAGVGAAGVVVGVGAVGVG
GCCSGPGHSKRRRQAPGVGAVGGGSPEREVEGAGYNSSEDEYEAARIEAMDPATVEQEHWFKALRDK
KGFIIKQMKEDGACLFRAVADQVYGDQDMHEVVRKHCMDYLMKNADYFSNYVTEFTTYINRKRKNNCHG
NHIEMQAMAEMYNRPVEVYQYSTGTSVEPINTFHGIHQNEDEPIRVSYHRNIHNSVVPNKATIGVGL
GLPSFKPGFAEQSLMKNAIKTSEESWIEQQMLEDKKRATDWEATNEAIEEQVARES YLQWLRDQEKQARQ
VRGPSQPRKASATCSSATAAASSGLEEWTSRSPRQRSSASSPEHPHELHAELGMKPPSPGTVLALAKPPSP
CAPGTSSQFSAGADRATSPLVSLYPALECRALIQMSPSAFGLNDWDDDEILASVLAVSQQEYLD SMKKK
KVHRDPPPKS

TRTRPLEQKLISEEDLAANDILDYKDDDDKV

Tag:	C-Myc/DDK
Purity:	> 80% as determined by SDS-PAGE and Coomassie blue staining
Concentration:	>0.05 µg/µL as determined by microplate BCA method
Labeling Method:	Labeled with [U- 13C6, 15N4]-L-Arginine and [U- 13C6, 15N2]-L-Lysine
Buffer:	25 mM Tris-HCl, 100 mM glycine, pH 7.3
Storage:	Store at -80°C. Avoid repeated freeze-thaw cycles.
Stability:	Stable for 3 months from receipt of products under proper storage and handling conditions.
RefSeq:	<u>NP_060072</u>
RefSeq Size:	2759
RefSeq ORF:	1713



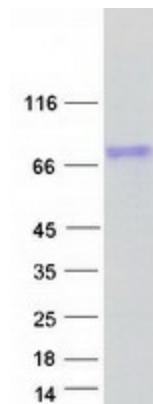
[View online »](#)

Synonyms: DUBA; MCAND
Locus ID: 55593
UniProt ID: [Q96G74](#), [A0A024QZ09](#)
Cytogenetics: Xp11.23

Summary: This gene encodes a member of the OTU (ovarian tumor) domain-containing cysteine protease superfamily. The OTU domain confers deubiquitinase activity and the encoded protein has been shown to suppress the type I interferon-dependent innate immune response by cleaving the polyubiquitin chain from an essential type I interferon adaptor protein. Cleavage results in disassociation of the adaptor protein from a downstream signaling complex and disruption of the type I interferon signaling cascade. Alternatively spliced transcript variants encoding different isoforms have been described. [provided by RefSeq, Oct 2008]

Protein Families: Protease
Protein Pathways: RIG-I-like receptor signaling pathway

Product images:



Coomassie blue staining of purified OTUD5 protein (Cat# [TP300893]). The protein was produced from HEK293T cells transfected with OTUD5 cDNA clone (Cat# [RC200893]) using MegaTran 2.0 (Cat# [TT210002]).