

Product datasheet for PH300888

XPNPEP3 (NM_022098) Human Mass Spec Standard

Product data:

Product Type:	Mass Spec Standards
Description:	XPNPEP3 MS Standard C13 and N15-labeled recombinant protein (NP_071381)
Species:	Human
Expression Host:	HEK293
Expression cDNA Clone or AA Sequence:	RC200888
Predicted MW:	57.1 kDa
Protein Sequence:	>RC200888 protein sequence Red=Cloning site Green=Tags(s)

MPWLLSAPKLVPAVANVRGLSGCMLCSQRRYSLQVPERRIPNRYLGQPSFTHPHLLRPGEVTPGLSQV
EYALRRHKLMSLIQKEAQGQSGTDQTVVVL SNPTYYSNDIPYTFHQDNNFLYLCGFQEPDSILVLQSLP
GKQLPSHKAILFVPRRDP SRELWDGPRSGTDGAIALTGVDEAYTLEEFQHLLPKMKAETNMVWYDWMRPS
HAQLHSDYMQL TEAKAKSKNKVRGVQQLIQRRLIKSPA EIERMQIAGKLT SQAFIETMFTSKAPVEEA
FLYAKFEFECRARGADILAYPPV VAGGNRSNTLHYVKNNQLIKDGEMVLLDGGCESSCYVSDITRTWPVN
GRFTAPQAELEYAVLEIQRDCLALCFPGTSL ENIYSMMLTLIGQKLDL GIMKNIKENNAFKAARKYCPH
HVGHYLGMDVHDT PDMRSLPLQPGMVI TIEPGIYIPEDDKDAPEKFRGLGVRIEDDVVVTQDSPFILSA
DCPKEMNDIEQICSQAS

TRTRPLEQKLI SEEDLAANDILDYKDDDDKV

Tag:	C-Myc/DDK
Purity:	> 80% as determined by SDS-PAGE and Coomassie blue staining
Concentration:	>0.05 µg/µL as determined by microplate BCA method
Labeling Method:	Labeled with [U- ¹³ C ₆ , ¹⁵ N ₄]-L-Arginine and [U- ¹³ C ₆ , ¹⁵ N ₂]-L-Lysine
Buffer:	25 mM Tris-HCl, 100 mM glycine, pH 7.3
Storage:	Store at -80°C. Avoid repeated freeze-thaw cycles.
Stability:	Stable for 3 months from receipt of products under proper storage and handling conditions.
RefSeq:	NP_071381
RefSeq Size:	8027
RefSeq ORF:	1521



[View online »](#)

Synonyms: APP3; ICP55; NPHPL1

Locus ID: 63929

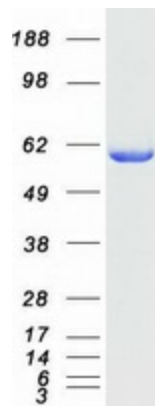
UniProt ID: [Q9NQH7](#)

Cytogenetics: 22q13.2

Summary: The protein encoded by this gene belongs to the family of X-pro-aminopeptidases that utilize a metal cofactor, and remove the N-terminal amino acid from peptides with a proline residue in the penultimate position. This protein has been shown to localize to the mitochondria of renal cells, and have a role in ciliary function. Mutations in this gene are associated with nephronophthisis-like nephropathy-1. Alternatively spliced transcript variants encoding different isoforms have been noted for this gene, however, expression of some of these isoforms in vivo is not known.[provided by RefSeq, Mar 2011]

Protein Families: Druggable Genome, Protease

Product images:



Coomassie blue staining of purified XPNPEP3 protein (Cat# [TP300888]). The protein was produced from HEK293T cells transfected with XPNPEP3 cDNA clone (Cat# [RC200888]) using MegaTran 2.0 (Cat# [TT210002]).