

## Product datasheet for PH300874

### DNA Polymerase epsilon (POLE3) (NM\_017443) Human Mass Spec Standard

#### Product data:

Product Type:	Mass Spec Standards
Description:	POLE3 MS Standard C13 and N15-labeled recombinant protein (NP_059139)
Species:	Human
Expression Host:	HEK293
Expression cDNA Clone or AA Sequence:	RC200874
Predicted MW:	16.9 kDa
Protein Sequence:	>RC200874 protein sequence Red=Cloning site Green=Tags(s)  MAERPEDLNLPNAVITRIKEALPDGVNISKEARSAISRAASVFLYATSCANNFAMKGRKTLNASDVL SAMEEMEFQRFVTPLEALEAYRREQKGGKEASEQKKKDKDKKTDSEEQDKSRDEDNDEEERLEEEEQN EEEEVDN  TRTRPLEQKLISEEDLAANDILDYKDDDDKV
Tag:	C-Myc/DDK
Purity:	> 80% as determined by SDS-PAGE and Coomassie blue staining
Concentration:	>0.05 µg/µL as determined by microplate BCA method
Labeling Method:	Labeled with [U- <sup>13</sup> C <sub>6</sub> , <sup>15</sup> N <sub>4</sub> ]-L-Arginine and [U- <sup>13</sup> C <sub>6</sub> , <sup>15</sup> N <sub>2</sub> ]-L-Lysine
Buffer:	25 mM Tris-HCl, 100 mM glycine, pH 7.3
Storage:	Store at -80°C. Avoid repeated freeze-thaw cycles.
Stability:	Stable for 3 months from receipt of products under proper storage and handling conditions.
RefSeq:	<a href="#">NP_059139</a>
RefSeq Size:	2288
RefSeq ORF:	441
Synonyms:	CHARAC17; CHRAC2; CHRAC17; p17; YBL1
Locus ID:	54107
UniProt ID:	<a href="#">Q9NRF9</a> , <a href="#">A0A024R829</a>



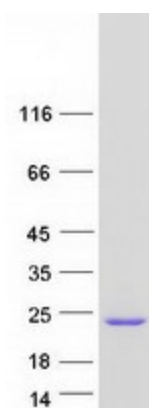
[View online »](#)

**Cytogenetics:** 9q32

**Summary:** POLE3 is a histone-fold protein that interacts with other histone-fold proteins to bind DNA in a sequence-independent manner. These histone-fold protein dimers combine within larger enzymatic complexes for DNA transcription, replication, and packaging.[supplied by OMIM, Apr 2004]

**Protein Pathways:** Base excision repair, DNA replication, Metabolic pathways, Nucleotide excision repair, Purine metabolism, Pyrimidine metabolism

### Product images:



Coomassie blue staining of purified POLE3 protein (Cat# [TP300874]). The protein was produced from HEK293T cells transfected with POLE3 cDNA clone (Cat# [RC200874]) using MegaTran 2.0 (Cat# [TT210002]).