

Product datasheet for PH300869

METTL3 (NM_019852) Human Mass Spec Standard

Product data:

Product Type:	Mass Spec Standards
Description:	METTL3 MS Standard C13 and N15-labeled recombinant protein (NP_062826)
Species:	Human
Expression Host:	HEK293
Expression cDNA Clone or AA Sequence:	RC200869
Predicted MW:	64.3 kDa
Protein Sequence:	>RC200869 representing NM_019852 Red=Cloning site Green=Tags(s)

MSDTWSSIQAHHKQLDSLRLRERLQRRKQDSGHLDLRNPEAALSPTFRSDSPVPTAPTSGGPKPSTASAVP
ELATDPELEKLLHHLSDLALTLPTDAVSICLAISTPDAPATQDGVESLLQKFAAQELIEVKRGLLQDDA
HPTLVTYADHSKLSAMMGAVAEKKGPEVAGTVTGQKRRAEQDSTTVAAFASSLVSLNSSASEPAKEPA
KKSRLKHAASDVLEIESLLNQSTKEQQSKKVSQEILELLNTTTAKEQSI VEKFRSRGRAQVQEFCDYGT
KEECMKASDADRPCRKLHFRIINKHTDESLGDCSFLNTCFHMDTCKYVHYEIDACMDSEAPGSKDHTPS
QELALTQSVGGDSSADRLFPPQWICCDIRYLDVSI LGKFAVVMADPPWDIHMELPYGTLTDDMRRLNIP
VLQDDGFLFLWVTGRAMELGRECLNLWGYERVDEIIWVKTNQLQRIIRTGRTGHWLNHGKEHCLVGVKGN
PQGFNQGLDCDVI VA EVRSTSHKPDEIYGMIERLSPGTRKIELFGRPHNVQPNWITLGNQLDGIHLLDPD
VVARFKQRYPDGIISKPKNL

TRTRPLEQKLISEEDLAANDILDYKDDDDKV

Tag:	C-Myc/DDK
Purity:	> 80% as determined by SDS-PAGE and Coomassie blue staining
Concentration:	>0.05 µg/µL as determined by microplate BCA method
Labeling Method:	Labeled with [U- 13C6, 15N4]-L-Arginine and [U- 13C6, 15N2]-L-Lysine
Buffer:	25 mM Tris-HCl, 100 mM glycine, pH 7.3
Storage:	Store at -80°C. Avoid repeated freeze-thaw cycles.
Stability:	Stable for 3 months from receipt of products under proper storage and handling conditions.
RefSeq:	NP_062826
RefSeq Size:	1975
RefSeq ORF:	1740



[View online »](#)

Synonyms: hMETTL3; IME4; M6A; MT-A70; Spo8

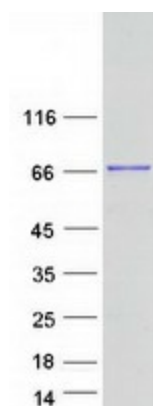
Locus ID: 56339

UniProt ID: [Q86U44](#)

Cytogenetics: 14q11.2

Summary: This gene encodes the 70 kDa subunit of MT-A which is part of N6-adenosine-methyltransferase. This enzyme is involved in the posttranscriptional methylation of internal adenosine residues in eukaryotic mRNAs, forming N6-methyladenosine. [provided by RefSeq, Jul 2008]

Product images:



Coomassie blue staining of purified METTL3 protein (Cat# [TP300869]). The protein was produced from HEK293T cells transfected with METTL3 cDNA clone (Cat# [RC200869]) using MegaTran 2.0 (Cat# [TT210002]).