

Product datasheet for PH300862

robl3 (LAMTOR2) (NM_014017) Human Mass Spec Standard

Product data:

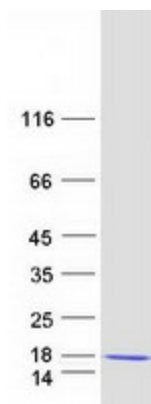
Product Type:	Mass Spec Standards
Description:	ROBLD3 MS Standard C13 and N15-labeled recombinant protein (NP_054736)
Species:	Human
Expression Host:	HEK293
Expression cDNA Clone or AA Sequence:	RC200862
Predicted MW:	13.5 kDa
Protein Sequence:	>RC200862 protein sequence Red=Cloning site Green=Tags(s) MLRPKAL TQVLSQANTGGVQSTLLLLNNEGSL LAYSGYGD TDARV TAAIASNIWAA YDRNGNQAFNEDNLK FILMDCMEGRVAITRVANLLLCMYAKETVGFGLKAKAQLVQYLEEPLTQVAAS TRTRPLEQKLISEEDLAANDILDYKDDDDKV
Tag:	C-Myc/DDK
Purity:	> 80% as determined by SDS-PAGE and Coomassie blue staining
Concentration:	>0.05 µg/µL as determined by microplate BCA method
Labeling Method:	Labeled with [U- 13C6, 15N4]-L-Arginine and [U- 13C6, 15N2]-L-Lysine
Buffer:	25 mM Tris-HCl, 100 mM glycine, pH 7.3
Storage:	Store at -80°C. Avoid repeated freeze-thaw cycles.
Stability:	Stable for 3 months from receipt of products under proper storage and handling conditions.
RefSeq:	NP_054736
RefSeq Size:	699
RefSeq ORF:	375
Synonyms:	ENDAP; HSPC003; MAPBP1P; MAPKSP1AP; p14; Ragulator2; ROBLD3
Locus ID:	28956
UniProt ID:	Q9Y2Q5
Cytogenetics:	1q22



[View online »](#)

Summary:

The product of this gene is highly conserved with a mouse protein associated with the cytoplasmic face of late endosomes and lysosomes. The mouse protein interacts with MAPK scaffold protein 1, a component of the mitogen-activated protein kinase pathway. In humans, a mutation in this gene has been associated with a primary immunodeficiency syndrome, and suggests a role for this protein in endosomal biogenesis. Multiple transcript variants encoding different isoforms have been found for this gene. [provided by RefSeq, Feb 2009]

Product images:

Coomassie blue staining of purified LAMTOR2 protein (Cat# [TP300862]). The protein was produced from HEK293T cells transfected with LAMTOR2 cDNA clone (Cat# [RC200862]) using MegaTran 2.0 (Cat# [TT210002]).