

Product datasheet for PH300859

C3orf26 (CMSS1) (NM_032359) Human Mass Spec Standard

Product data:

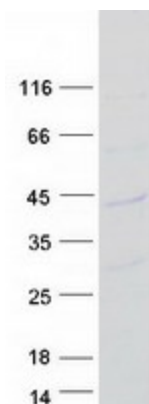
Product Type:	Mass Spec Standards
Description:	C3orf26 MS Standard C13 and N15-labeled recombinant protein (NP_115735)
Species:	Human
Expression Host:	HEK293
Expression cDNA Clone or AA Sequence:	RC200859
Predicted MW:	31.8 kDa
Protein Sequence:	>RC200859 protein sequence Red=Cloning site Green=Tags(s) MADDLGDEWVENQPTGAGSSPEASDGEGEDTEVMQQETVPVVPVSEKTKQPKECFLIQPKERKENTTKT RKRRKKKITDVLAKSEPKPLPEDLQKLMKDYYSSRRLVIELEELNLPDSCFLKANDLTHSLSSYLKGC PKWVKLRKNHSEKKSVLMLIICSSAVRALELIRSMTAFRGDGKVIKLF AKHIKVQAQVKLLEKRVVHLGV GTPGRIKELVKQGGLNLSPLKFLVFDWNWRDQKLRRMDIPEIRKEVFELLEMVLSLCKSESLKGLF TRTRPLEQKLISEEDLAANDILDYKDDDDKV
Tag:	C-Myc/DDK
Purity:	> 80% as determined by SDS-PAGE and Coomassie blue staining
Concentration:	>0.05 µg/µL as determined by microplate BCA method
Labeling Method:	Labeled with [U- ¹³ C ₆ , ¹⁵ N ₄]-L-Arginine and [U- ¹³ C ₆ , ¹⁵ N ₂]-L-Lysine
Buffer:	25 mM Tris-HCl, 100 mM glycine, pH 7.3
Storage:	Store at -80°C. Avoid repeated freeze-thaw cycles.
Stability:	Stable for 3 months from receipt of products under proper storage and handling conditions.
RefSeq:	NP_115735
RefSeq Size:	1230
RefSeq ORF:	837
Synonyms:	C3orf26
Locus ID:	84319
UniProt ID:	Q9BQ75



[View online »](#)

Cytogenetics: 3q12.1

Product images:



Coomassie blue staining of purified CMSS1 protein (Cat# [TP300859]). The protein was produced from HEK293T cells transfected with CMSS1 cDNA clone (Cat# [RC200859]) using MegaTran 2.0 (Cat# [TT210002]).