

## Product datasheet for PH300853

### PLPBP (NM\_007198) Human Mass Spec Standard

#### Product data:

Product Type:	Mass Spec Standards
Description:	PROSC MS Standard C13 and N15-labeled recombinant protein (NP_009129)
Species:	Human
Expression Host:	HEK293
Expression cDNA Clone or AA Sequence:	RC200853
Predicted MW:	30.3 kDa
Protein Sequence:	>RC200853 protein sequence Red=Cloning site Green=Tags(s)  MWRAGMSAELGVGCALRAVNERVQQAVARRPRDLPAIQPRLVAVSKTKPADMVEIAYGHGQRTFGENYV QELLEKASNPKILSLCPEIKWHFIGHLQKQNVNKLMAVPNLFMLETVDSVKLADKVNSSWQRKGSPELTK VMVQINTSGEESKHGLPPSETIAIVEHINAKCPNLEFVGLMTIGSFGHDSLQGPNDPQLLLSLREELCK KLNIPADQVELSMGMSADFQHAVEVGSTNVRIGSTIFGERDYSKKTPTDKCAADVKAPEVAQEH  TRTRPLEQKLI SEEDLAANDILDYKDDDDKV
Tag:	C-Myc/DDK
Purity:	> 80% as determined by SDS-PAGE and Coomassie blue staining
Concentration:	>0.05 µg/µL as determined by microplate BCA method
Labeling Method:	Labeled with [U- <sup>13</sup> C <sub>6</sub> , <sup>15</sup> N <sub>4</sub> ]-L-Arginine and [U- <sup>13</sup> C <sub>6</sub> , <sup>15</sup> N <sub>2</sub> ]-L-Lysine
Buffer:	25 mM Tris-HCl, 100 mM glycine, pH 7.3
Storage:	Store at -80°C. Avoid repeated freeze-thaw cycles.
Stability:	Stable for 3 months from receipt of products under proper storage and handling conditions.
RefSeq:	<a href="#">NP_009129</a>
RefSeq Size:	2586
RefSeq ORF:	825
Synonyms:	EPVB6D; PROSC
Locus ID:	11212
UniProt ID:	<a href="#">O94903</a>

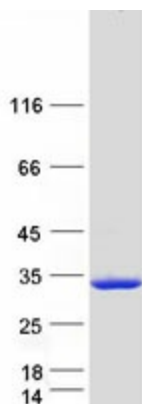


[View online »](#)

Cytogenetics: 8p11.23

**Summary:** This gene encodes a pyridoxal 5'-phosphate binding protein involved in the homeostatic regulation of intracellular pyridoxal 5'-phosphate. This gene has a tumor suppressive effect on hepatocellular carcinoma and other solid tumors of epithelial origin. Naturally occurring mutations in this gene are associated with a pyridoxine-dependent epilepsy. [provided by RefSeq, Mar 2017]

**Product images:**



Coomassie blue staining of purified PLPBP protein (Cat# [TP300853]). The protein was produced from HEK293T cells transfected with PLPBP cDNA clone (Cat# [RC200853]) using MegaTran 2.0 (Cat# [TT210002]).