

Product datasheet for PH300842

RPE (NM_199229) Human Mass Spec Standard

Product data:

Product Type:	Mass Spec Standards
Description:	RPE MS Standard C13 and N15-labeled recombinant protein (NP_954699)
Species:	Human
Expression Host:	HEK293
Expression cDNA Clone or AA Sequence:	RC200842
Predicted MW:	24.9 kDa
Protein Sequence:	>RC200842 protein sequence Red=Cloning site Green=Tags(s) MASGCKIGPSILNSDLANLGAELRMLDSGADYLHLDVMDGHFVPNITFGHPVVESLRKQLGQDPFFDMH MMVSKPEQWVKPMAVAGANQYTFHLEATENPGALIKDIRENGMKVGLAIKPGTSVEYLAPWANQIDMALV MTVEPGFGGQKFMEDMMPKVHWLRTQFPSLDIEVDGGVGPDTVHKCAEAGANMIVSGSAIMRSEDPRSVI NLLRNVCSAAQKRSLDR TRTRPLEQKLI SEEDLAANDILDYKDDDDKV
Tag:	C-Myc/DDK
Purity:	> 80% as determined by SDS-PAGE and Coomassie blue staining
Concentration:	>0.05 µg/µL as determined by microplate BCA method
Labeling Method:	Labeled with [U- 13C6, 15N4]-L-Arginine and [U- 13C6, 15N2]-L-Lysine
Buffer:	25 mM Tris-HCl, 100 mM glycine, pH 7.3
Storage:	Store at -80°C. Avoid repeated freeze-thaw cycles.
Stability:	Stable for 3 months from receipt of products under proper storage and handling conditions.
RefSeq:	NP_954699
RefSeq Size:	3265
RefSeq ORF:	684
Synonyms:	RPE2-1
Locus ID:	6120
UniProt ID:	Q96AT9



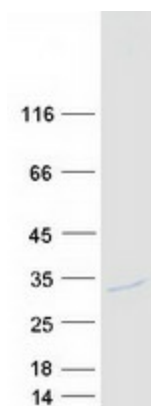
[View online »](#)

Cytogenetics: 2q34

Summary: Catalyzes the reversible epimerization of D-ribulose 5-phosphate to D-xylulose 5-phosphate. [UniProtKB/Swiss-Prot Function]

Protein Pathways: Metabolic pathways, Pentose and glucuronate interconversions, Pentose phosphate pathway

Product images:



Coomassie blue staining of purified RPE protein (Cat# [TP300842]). The protein was produced from HEK293T cells transfected with RPE cDNA clone (Cat# [RC200842]) using MegaTran 2.0 (Cat# [TT210002]).