

Product datasheet for PH300838

KCTD15 (NM_024076) Human Mass Spec Standard

Product data:

Product Type:	Mass Spec Standards
Description:	KCTD15 MS Standard C13 and N15-labeled recombinant protein (NP_076981)
Species:	Human
Expression Host:	HEK293
Expression cDNA Clone or AA Sequence:	RC200838
Predicted MW:	26.5 kDa
Protein Sequence:	>RC200838 protein sequence Red=Cloning site Green=Tags(s) MPHRKERPSGSSLHTHGSTGTAEGGNMSRLSLTRSPVSPPLAAQGIPLPAQLTKSNAPVHIDVGSHMYTSS LATLTKYPDSRISRLFNGTEPIVLDLQHYFIDRDGEIFRYVLSFLRTSKLLL PDDFKDFSLLYEEARY YQLQPMVRELERWQQEQEQRRRSRACDCLVVRVTPDLGERIALSGEKALIEEVFPETGDVMCNSVNAGWN QDPHVIRFPLNGYCRLNSVQDVL TRTRPLEQKLI SEEDLAANDILDYKDDDDKV
Tag:	C-Myc/DDK
Purity:	> 80% as determined by SDS-PAGE and Coomassie blue staining
Concentration:	>0.05 µg/µL as determined by microplate BCA method
Labeling Method:	Labeled with [U- ¹³ C ₆ , ¹⁵ N ₄]-L-Arginine and [U- ¹³ C ₆ , ¹⁵ N ₂]-L-Lysine
Buffer:	25 mM Tris-HCl, 100 mM glycine, pH 7.3
Storage:	Store at -80°C. Avoid repeated freeze-thaw cycles.
Stability:	Stable for 3 months from receipt of products under proper storage and handling conditions.
RefSeq:	NP_076981
RefSeq Size:	4935
RefSeq ORF:	702
Locus ID:	79047
UniProt ID:	Q96S11
Cytogenetics:	19q13.11

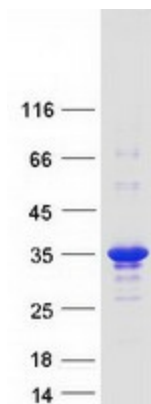


[View online »](#)

Summary: During embryonic development, interferes with neural crest formation (By similarity). Inhibits AP2 transcriptional activity by interaction with its activation domain.[UniProtKB/Swiss-Prot Function]

Protein Families: Ion Channels: Other

Product images:



Coomassie blue staining of purified KCTD15 protein (Cat# [TP300838]). The protein was produced from HEK293T cells transfected with KCTD15 cDNA clone (Cat# [RC200838]) using MegaTran 2.0 (Cat# [TT210002]).