

Product datasheet for PH300821

CDCA3 (NM_031299) Human Mass Spec Standard

Product data:

Product Type:	Mass Spec Standards
Description:	CDCA3 MS Standard C13 and N15-labeled recombinant protein (NP_112589)
Species:	Human
Expression Host:	HEK293
Expression cDNA Clone or AA Sequence:	RC200821
Predicted MW:	29 kDa
Protein Sequence:	>RC200821 protein sequence Red=Cloning site Green=Tags(s) MGSAKSVPVTPARPPPHNKLARVADPRSPSAGILRTPIQVESSPOGPLPAGEQLEGLKHAQSDPRSPT LGIARTPMKTSSGDPPSPLVKQLSEVFETEDSKSNLPPEPVLPEAPLSSELDLPLGTQLSVEEQMPPWN QTEFPSKQVFSKEEARQPTETPVASQSSDKPSRDPETPRSSGSMRNRWKPNSSKVLGRSPLTILQDDNSP GTLTLRQGKRPSPLSENVSELKEGAILGTGRLLKTGGRAWEQGDHDKENQHFLVES TRTRPLEQKLI SEEDLAANDILDYKDDDDKV
Tag:	C-Myc/DDK
Purity:	> 80% as determined by SDS-PAGE and Coomassie blue staining
Concentration:	>0.05 µg/µL as determined by microplate BCA method
Labeling Method:	Labeled with [U- ¹³ C ₆ , ¹⁵ N ₄]-L-Arginine and [U- ¹³ C ₆ , ¹⁵ N ₂]-L-Lysine
Buffer:	25 mM Tris-HCl, 100 mM glycine, pH 7.3
Storage:	Store at -80°C. Avoid repeated freeze-thaw cycles.
Stability:	Stable for 3 months from receipt of products under proper storage and handling conditions.
RefSeq:	NP_112589
RefSeq Size:	1944
RefSeq ORF:	804
Synonyms:	GRCC8; TOME-1
Locus ID:	83461
UniProt ID:	Q99618

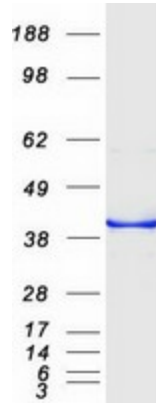


[View online »](#)

Cytogenetics: 12p13.31

Summary: F-box-like protein which is required for entry into mitosis. Acts by participating in E3 ligase complexes that mediate the ubiquitination and degradation of WEE1 kinase at G2/M phase (By similarity).[UniProtKB/Swiss-Prot Function]

Product images:



Coomassie blue staining of purified CDCA3 protein (Cat# [TP300821]). The protein was produced from HEK293T cells transfected with CDCA3 cDNA clone (Cat# [RC200821]) using MegaTran 2.0 (Cat# [TT210002]).