

Product datasheet for PH300810

PRP19 (PRPF19) (NM_014502) Human Mass Spec Standard

Product data:

Product Type:	Mass Spec Standards
Description:	PRPF19 MS Standard C13 and N15-labeled recombinant protein (NP_055317)
Species:	Human
Expression Host:	HEK293
Expression cDNA Clone or AA Sequence:	RC200810
Predicted MW:	55.2 kDa
Protein Sequence:	>RC200810 protein sequence Red=Cloning site Green=Tags(s)

MSLICISISNEVPEHPCVSPVSNHVYERRLIEKYIAENGTDPINNQPLSEEQLIDIKVAHPIRPKPPSATS
IPAILKALQDEWDAVMLHSFTLRQQLQTRQELSHALYQHDAACRVIARLTKEVTAAREALATLKPQAGL
IVPQAVPSSQPSVVGAGEPMDLGELVGMTPEIIQKLQDKATVLTTERKKRGKTVPEELVKPEELSKYRQV
ASHVGLHSASIPGILALDLCPSDTNKILTGGADKNVVVFDKSSEQILATLKGHTKKVTSVVFHPSQDLVF
SASPDATIRIWSVPNASCVQVRAHESAVTGLSLHATGDYLLSSDDQYWAFSDIQTGRVLTKVTDETSG
CSLTCAQFHPDGLIFGTGTMSQIKIIDLKERTNVANFPGHSGPITSIAFSENGYLLATAADDSSVKLWD
LRKLNFKTLQLDNNFEVKSLIFDQSGTYLALGGTDVQIYICKQWTEILHFTEHSGLTGVAFGHHAKFI
ASTGMDRSLKFYSL

TRTRPLEQKLISEEDLAANDILDYKDDDDKV

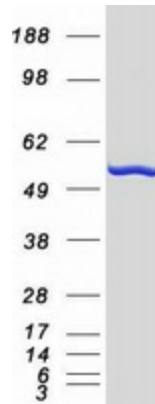
Tag:	C-Myc/DDK
Purity:	> 80% as determined by SDS-PAGE and Coomassie blue staining
Concentration:	>0.05 µg/µL as determined by microplate BCA method
Labeling Method:	Labeled with [U- ¹³ C ₆ , ¹⁵ N ₄]-L-Arginine and [U- ¹³ C ₆ , ¹⁵ N ₂]-L-Lysine
Buffer:	25 mM Tris-HCl, 100 mM glycine, pH 7.3
Storage:	Store at -80°C. Avoid repeated freeze-thaw cycles.
Stability:	Stable for 3 months from receipt of products under proper storage and handling conditions.
RefSeq:	<u>NP_055317</u>
RefSeq Size:	2342
RefSeq ORF:	1512



[View online »](#)

Synonyms:	hPSO4; NMP200; PRP19; PSO4; SNEV; UBOX4
Locus ID:	27339
UniProt ID:	Q9UMS4
Cytogenetics:	11q12.2
Summary:	PSO4 is the human homolog of yeast Pso4, a gene essential for cell survival and DNA repair (Beck et al., 2008 [PubMed 18263876]).[supplied by OMIM, Sep 2008]
Protein Families:	Druggable Genome
Protein Pathways:	Spliceosome, Ubiquitin mediated proteolysis

Product images:



Coomassie blue staining of purified PRPF19 protein (Cat# [TP300810]). The protein was produced from HEK293T cells transfected with PRPF19 cDNA clone (Cat# [RC200810]) using MegaTran 2.0 (Cat# [TT210002]).