

## Product datasheet for PH300809

### MTMR14 (NM\_022485) Human Mass Spec Standard

#### Product data:

Product Type:	Mass Spec Standards
Description:	MTMR14 MS Standard C13 and N15-labeled recombinant protein (NP_071930)
Species:	Human
Expression Host:	HEK293
Expression cDNA Clone or AA Sequence:	RC200809
Predicted MW:	60 kDa
Protein Sequence:	>RC200809 protein sequence Red=Cloning site Green=Tags(s)

MAGARAAAAAASAGSSASSGNQPPQELGLGELLEEF SRTQYRAKDGSGTGGSKVERIEKRCLLELFGRDYC  
FSVIPNTNGD ICGHYPRHIVFLEYESSEKEKDTFESTVQVSKLQDLIHRSKMARCGRFVCPVILFKGKH  
ICRSATLAGWEL YGRSGYNYFFSGGADDAWADVTEEDCALRSGDTHLFDKVRGYDIKLLRYLSVKY  
ICDLMVENKKVKFGMNVTSSEKVDKAQRYADFTLLSIPYPGCEFFKEYKDRDYMAEGLIFNWKQDYVDAP  
LSIPDFLTHSLNIDWSQYQCWDLVQQTQNYLKL LLSLVNSDDSGLLVHCISGWDRTPLFISLLRSLWA  
DGLIHTSLKPTEILYLTVAYDWFLFGHMLVDRLSKGEEIFFFCFNFLKHITSEEF SALKTQRRKSLPARD  
GGFTLEDICMLRRKDRGTTSLGSDFLVMESSPGATGSFTYEAVELVPAGAPTQAAWLAALSDRETRLQ  
EVRSAFLAAYSSTVGLRAVAPSPSGAIGLLEQFARGVGLRSISSNAL

TRTRPLEQKLI SEEDLAANDILDYKDDDDKV

Tag:	C-Myc/DDK
Purity:	> 80% as determined by SDS-PAGE and Coomassie blue staining
Concentration:	>0.05 µg/µL as determined by microplate BCA method
Labeling Method:	Labeled with [U- 13C6, 15N4]-L-Arginine and [U- 13C6, 15N2]-L-Lysine
Buffer:	25 mM Tris-HCl, 100 mM glycine, pH 7.3
Storage:	Store at -80°C. Avoid repeated freeze-thaw cycles.
Stability:	Stable for 3 months from receipt of products under proper storage and handling conditions.
RefSeq:	<u>NP_071930</u>
RefSeq Size:	2200
RefSeq ORF:	1614



[View online »](#)

Synonyms: C3orf29

Locus ID: 64419

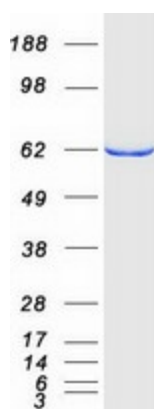
UniProt ID: [Q8NCE2](#)

Cytogenetics: 3p25.3

**Summary:** This gene encodes a myotubularin-related protein. The encoded protein is a phosphoinositide phosphatase that specifically dephosphorylates phosphatidylinositol 3,5-biphosphate and phosphatidylinositol 3-phosphate. Mutations in this gene are correlated with autosomal dominant centronuclear myopathy. Alternate splicing results in multiple transcript variants. A pseudogene of this gene is found on chromosome 18.[provided by RefSeq, Apr 2010]

**Protein Families:** Druggable Genome, Phosphatase, Secreted Protein

### Product images:



Coomassie blue staining of purified MTMR14 protein (Cat# [TP300809]). The protein was produced from HEK293T cells transfected with MTMR14 cDNA clone (Cat# [RC200809]) using MegaTran 2.0 (Cat# [TT210002]).