

Product datasheet for PH300808

SLC35A4 (NM_080670) Human Mass Spec Standard

Product data:

Product Type:	Mass Spec Standards
Description:	SLC35A4 MS Standard C13 and N15-labeled recombinant protein (NP_542401)
Species:	Human
Expression Host:	HEK293
Expression cDNA Clone or AA Sequence:	RC200808
Predicted MW:	34.6 kDa
Protein Sequence:	>RC200808 protein sequence Red =Cloning site Green =Tags(s) MSVEDGGMPGLGRPRQARWTLMLLLSTAMYGAHAPLLALCHVDGRVFPSPSSAVLLTELTKLLLCAFSLLVGWQAWPQGGPPWRQAAPFALSALLYGANNLVIYLQRYMDPSTYQVLSNLKIGSTAVLYCLCLRHLRSVRQGLALLLLMAAGACYAAGGLQVPGNTLPSPPAAAAASPMLHITPLGLLLLILYCLISGLSSVYTELLMKRQRLPLALQNLFLYTFGVLLNLGLHAGGGSGPGLLEGFSGWAALVVLSQALNGLLMSAVMKHGSSITRLFVVSCSLVAVLRLQLTAAFFLATLLIGLAMRLYYGSR TRTRPLEQKLISEEDLAANDILDYKDDDDKV
Tag:	C-Myc/DDK
Purity:	> 80% as determined by SDS-PAGE and Coomassie blue staining
Concentration:	>0.05 µg/µL as determined by microplate BCA method
Labeling Method:	Labeled with [U- ¹³ C ₆ , ¹⁵ N ₄]-L-Arginine and [U- ¹³ C ₆ , ¹⁵ N ₂]-L-Lysine
Buffer:	25 mM Tris-HCl, 100 mM glycine, pH 7.3
Storage:	Store at -80°C. Avoid repeated freeze-thaw cycles.
Stability:	Stable for 3 months from receipt of products under proper storage and handling conditions.
RefSeq:	NP_542401
RefSeq Size:	2676
RefSeq ORF:	972
Locus ID:	113829
UniProt ID:	Q96G79

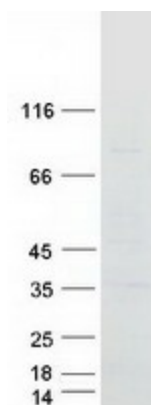


[View online »](#)

Cytogenetics: 5q31.3

Protein Families: Transmembrane

Product images:



Coomassie blue staining of purified SLC35A4 protein (Cat# [TP300808]). The protein was produced from HEK293T cells transfected with SLC35A4 cDNA clone (Cat# [RC200808]) using MegaTran 2.0 (Cat# [TT210002]).