

## Product datasheet for PH300801

### SPSB2 (NM\_032641) Human Mass Spec Standard

#### Product data:

Product Type:	Mass Spec Standards
Description:	SPSB2 MS Standard C13 and N15-labeled recombinant protein (NP_116030)
Species:	Human
Expression Host:	HEK293
Expression cDNA Clone or AA Sequence:	RC200801
Predicted MW:	28.6 kDa
Protein Sequence:	>RC200801 protein sequence Red=Cloning site Green=Tags(s)  MGQTALAGSSSTPTPQALYPDLSCPEGLEELL SAPPDLGAQRRHGWNPKDCSENIEVKEGGLYFERRP VAQSTDGARGKRGYSRGLHAWEI SWPLEQRGTHAVVGVATALAPLQTDHYAALLGSNSESWGWDIGRGKL YHQSKGPGAPQYPAGTQGEQLEVPERLLVLDMEEGTLGYAIGGTYLGPAPFRGLKGRITLYPAVSAVWGQC QVRIRYLGERRAEPHSLHL SRLCVRHNLGDTRLGQVSALPLPPAMKRYLLYQ  TRTRPLEQKLI SEEDLAANDILDYKDDDDKV
Tag:	C-Myc/DDK
Purity:	> 80% as determined by SDS-PAGE and Coomassie blue staining
Concentration:	>0.05 µg/µL as determined by microplate BCA method
Labeling Method:	Labeled with [U- 13C6, 15N4]-L-Arginine and [U- 13C6, 15N2]-L-Lysine
Buffer:	25 mM Tris-HCl, 100 mM glycine, pH 7.3
Storage:	Store at -80°C. Avoid repeated freeze-thaw cycles.
Stability:	Stable for 3 months from receipt of products under proper storage and handling conditions.
RefSeq:	<a href="#">NP_116030</a>
RefSeq Size:	1272
RefSeq ORF:	789
Synonyms:	GRCC9; SSB2
Locus ID:	84727
UniProt ID:	<a href="#">Q99619</a>



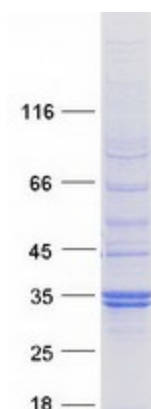
[View online »](#)

Cytogenetics: 12p13.31

**Summary:** This gene encodes a member of a subfamily of proteins containing a central SPRY (repeats in splA and RyR) domain and a C-terminal suppressor of cytokine signaling (SOCS) box. This protein plays a role in cell signaling. This gene is present in a gene-rich cluster on chromosome 12p13 in the vicinity of the CD4 antigen and triosephosphate isomerase genes. Alternative splicing results in multiple transcript variants. [provided by RefSeq, Feb 2016]

Protein Families: Druggable Genome

### Product images:



Coomassie blue staining of purified SPSB2 protein (Cat# [TP300801]). The protein was produced from HEK293T cells transfected with SPSB2 cDNA clone (Cat# [RC200801]) using MegaTran 2.0 (Cat# [TT210002]).