

Product datasheet for PH300790

CUEDC2 (NM_024040) Human Mass Spec Standard

Product data:

Product Type:	Mass Spec Standards
Description:	CUEDC2 MS Standard C13 and N15-labeled recombinant protein (NP_076945)
Species:	Human
Expression Host:	HEK293
Expression cDNA Clone or AA Sequence:	RC200790
Predicted MW:	24.7 kDa
Protein Sequence:	>RC200790 protein sequence Red =Cloning site Green =Tags(s) MELERIVSAALLAFVQTHLPEADLSGLDEVIFSYVLGVLEDLGPSPGSEENFDMEAFTEMMEAYVPGFAH IPRGTIGDMMQKLSGQLSDARNKENLQPQSSGVQGVPIISPEPLQRPEMLKEETRSSAAAAADTQDEATG AEEELLPGVDVLLLEVFPVTCVVEQAQWVLAARGDLEEAVQMLVEGKEEGPAAWEGPNQDLPRRLRGPQKD ELKSFILQKYYMVDSA TRTRPLEQKLI SEEDLAANDILDYKDDDDKV
Tag:	C-Myc/DDK
Purity:	> 80% as determined by SDS-PAGE and Coomassie blue staining
Concentration:	>0.05 µg/µL as determined by microplate BCA method
Labeling Method:	Labeled with [U- ¹³ C ₆ , ¹⁵ N ₄]-L-Arginine and [U- ¹³ C ₆ , ¹⁵ N ₂]-L-Lysine
Buffer:	25 mM Tris-HCl, 100 mM glycine, pH 7.3
Storage:	Store at -80°C. Avoid repeated freeze-thaw cycles.
Stability:	Stable for 3 months from receipt of products under proper storage and handling conditions.
RefSeq:	NP_076945
RefSeq Size:	1203
RefSeq ORF:	678
Synonyms:	bA18114.5; C10orf66
Locus ID:	79004
UniProt ID:	Q9H467

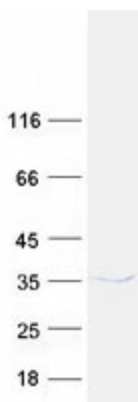


[View online »](#)

Cytogenetics: 10q24.32

Summary: Down-regulates ESR1 protein levels through the ubiquitination-proteasome pathway, regardless of the presence of 17 beta-estradiol. Also involved in 17 beta-estradiol-induced ESR1 degradation. Controls PGR protein levels through a similar mechanism. [UniProtKB/Swiss-Prot Function]

Product images:



Coomassie blue staining of purified CUEDC2 protein (Cat# [TP300790]). The protein was produced from HEK293T cells transfected with CUEDC2 cDNA clone (Cat# [RC200790]) using MegaTran 2.0 (Cat# [TT210002]).