

Product datasheet for PH300789

MIS12 (NM_024039) Human Mass Spec Standard

Product data:

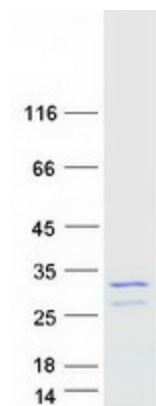
Product Type:	Mass Spec Standards
Description:	MIS12 MS Standard C13 and N15-labeled recombinant protein (NP_076944)
Species:	Human
Expression Host:	HEK293
Expression cDNA Clone or AA Sequence:	RC200789
Predicted MW:	24.1 kDa
Protein Sequence:	<p>>RC200789 protein sequence</p> <p>Red=Cloning site Green=Tags(s)</p> <p>MSVDPMTYEAQFFGFTPQTCLMRIYIAFDYLFVEMQAVEQVILKKLDGIPDCDISPVQIRKCTEKFLCF MKGHFDNLFKMEQLFLQLILRIPSNILLPEDKCKETPYSEEDFQHLQKEIEQLQEKYKTELCTKQALLA ELEEQKIVQAKLKQTLTFFDELHNVGRDHGTSDFRESLVSLVQNSRKLQNIRDNVEKESKRLKIS</p> <p>TRTRPLEQKLISEEDLAANDILDYKDDDDKV</p>
Tag:	C-Myc/DDK
Purity:	> 80% as determined by SDS-PAGE and Coomassie blue staining
Concentration:	>0.05 µg/µL as determined by microplate BCA method
Labeling Method:	Labeled with [U- ¹³ C ₆ , ¹⁵ N ₄]-L-Arginine and [U- ¹³ C ₆ , ¹⁵ N ₂]-L-Lysine
Buffer:	25 mM Tris-HCl, 100 mM glycine, pH 7.3
Storage:	Store at -80°C. Avoid repeated freeze-thaw cycles.
Stability:	Stable for 3 months from receipt of products under proper storage and handling conditions.
RefSeq:	NP_076944
RefSeq Size:	2543
RefSeq ORF:	615
Synonyms:	2510025F08Rik; hMis12; KNTC2AP; MTW1
Locus ID:	79003
UniProt ID:	Q9H081 , A8K1M4


[View online »](#)

Cytogenetics: 17p13.2

Summary: Part of the MIS12 complex which is required for normal chromosome alignment and segregation and for kinetochore formation during mitosis (PubMed:12515822, PubMed:15502821, PubMed:16585270). Essential for proper kinetochore microtubule attachments (PubMed:23891108).[UniProtKB/Swiss-Prot Function]

Product images:



Coomassie blue staining of purified MIS12 protein (Cat# [TP300789]). The protein was produced from HEK293T cells transfected with MIS12 cDNA clone (Cat# [RC200789]) using MegaTran 2.0 (Cat# [TT210002]).