

Product datasheet for PH300782

C11orf48 (LBHD1) (NM_024099) Human Mass Spec Standard

Product data:

Product Type:	Mass Spec Standards
Description:	C11orf48 MS Standard C13 and N15-labeled recombinant protein (NP_077004)
Species:	Human
Expression Host:	HEK293
Expression cDNA Clone or AA Sequence:	RC200782
Predicted MW:	28.8 kDa
Protein Sequence:	>RC200782 protein sequence Red=Cloning site Green=Tags(s) MALVPGRSKEDGLWTRNSPGSSQHPESPRLPNPLWDRGKIGKVEGHQHIQDFSQKSHLPSTIVVESSEVNE ESGDLHLPHEELLLLTDGEEEDAEAFFQDQSEEPGAWSPQDPRSPRLRTFNAGLSWGQDQDEEDACWILE DTACLEATNHCPFDSTGSRVCRSGFVEYSHLLPPNSFEGAEAAAQVTPAGVESGAASEAPGGRGCDRPR ADHAAPPQEAGVQCTCQHYTVREEAQKTPPADPACPEREDSHGSGSPFKASQD TRTRPLEQKLI SEEDLAANDILDYKDDDDKV
Tag:	C-Myc/DDK
Purity:	> 80% as determined by SDS-PAGE and Coomassie blue staining
Concentration:	>0.05 µg/µL as determined by microplate BCA method
Labeling Method:	Labeled with [U- 13C6, 15N4]-L-Arginine and [U- 13C6, 15N2]-L-Lysine
Buffer:	25 mM Tris-HCl, 100 mM glycine, pH 7.3
Storage:	Store at -80°C. Avoid repeated freeze-thaw cycles.
Stability:	Stable for 3 months from receipt of products under proper storage and handling conditions.
RefSeq:	NP_077004
RefSeq Size:	1357
RefSeq ORF:	789
Synonyms:	C11orf48
Locus ID:	79081
UniProt ID:	Q9BQE6 , A0A024R584

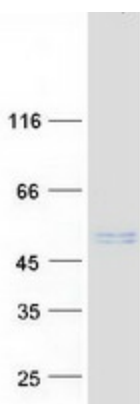


[View online »](#)

Cytogenetics: 11q12.3

Summary: This gene shares three exons in common with another gene, chromosome 11 open reading frame 98 (GeneID:102288414), but the encoded protein uses a reading frame that is different from that of the chromosome 11 open reading frame 98 gene. [provided by RefSeq, Nov 2017]

Product images:



Coomassie blue staining of purified LBHD1 protein (Cat# [TP300782]). The protein was produced from HEK293T cells transfected with LBHD1 cDNA clone (Cat# [RC200782]) using MegaTran 2.0 (Cat# [TT210002]).