

Product datasheet for PH300778

OBFC1 (STN1) (NM_024928) Human Mass Spec Standard

Product data:

Product Type:	Mass Spec Standards
Description:	OBFC1 MS Standard C13 and N15-labeled recombinant protein (NP_079204)
Species:	Human
Expression Host:	HEK293
Expression cDNA Clone or AA Sequence:	RC200778
Predicted MW:	42.1 kDa
Protein Sequence:	>RC200778 protein sequence Red=Cloning site Green=Tags(s)

MQPGSSRCEEETPSLLWGLDPVFLAFALYIRDILDMKESRQVPGVFLYNGHPIKQVDVLGTVIGVRERD
AFYSYGVDDSTGVINCICWKKLNTESVSAAPSAARELSLTSQKLLQETIEQKTKIEIGDTRVRSIRT
YREEREIHATAYYKVDDPVWNIQIARMLLEPTIYRKVYDQPFHSSALEKEEALSNPGALDPLSLTSLSE
KAKEFLMENRVQSFYQQELEMVESLLSLANQPVIHSACSDQVNFKDDTTSKAIHSIFKNAIQLLQEKGLV
FQKDDGFDNLYYVTREKDLHRKIHRIIQQDCQKPNHMEKGCHFLHILACARLSIRPGLSEAVLQQVLEL
LEDQSDIVSTMEHYTAF

TRTRPLEQKLI SEEDLAANDILDYKDDDDKV

Tag:	C-Myc/DDK
Purity:	> 80% as determined by SDS-PAGE and Coomassie blue staining
Concentration:	>0.05 µg/µL as determined by microplate BCA method
Labeling Method:	Labeled with [U- ¹³ C ₆ , ¹⁵ N ₄]-L-Arginine and [U- ¹³ C ₆ , ¹⁵ N ₂]-L-Lysine
Buffer:	25 mM Tris-HCl, 100 mM glycine, pH 7.3
Storage:	Store at -80°C. Avoid repeated freeze-thaw cycles.
Stability:	Stable for 3 months from receipt of products under proper storage and handling conditions.
RefSeq:	NP_079204
RefSeq Size:	6483
RefSeq ORF:	1104
Synonyms:	AAF-44; AAF44; bA541N10.2; OBFC1; RPA-32
Locus ID:	79991



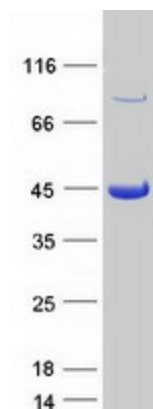
[View online »](#)

UniProt ID: [Q9H668](#)

Cytogenetics: 10q24.33

Summary: OBFC1 and C17ORF68 (MIM 613129) are subunits of an alpha accessory factor (AAF) that stimulates the activity of DNA polymerase-alpha-primase (see MIM 176636), the enzyme that initiates DNA replication (Casteel et al., 2009 [PubMed 19119139]). OBFC1 also appears to function in a telomere-associated complex with C17ORF68 and TEN1 (C17ORF106; MIM 613130) (Miyake et al., 2009 [PubMed 19854130]).[supplied by OMIM, Nov 2009]

Product images:



Coomassie blue staining of purified STN1 protein (Cat# [TP300778]). The protein was produced from HEK293T cells transfected with STN1 cDNA clone (Cat# [RC200778]) using MegaTran 2.0 (Cat# [TT210002]).