

Product datasheet for PH300764

ELAC2 (NM_018127) Human Mass Spec Standard

Product data:

Product Type:	Mass Spec Standards
Description:	ELAC2 MS Standard C13 and N15-labeled recombinant protein (NP_060597)
Species:	Human
Expression Host:	HEK293
Expression cDNA Clone or AA Sequence:	RC200764
Predicted MW:	92.2 kDa
Protein Sequence:	>RC200764 protein sequence Red=Cloning site Green=Tags(s)

MWALCSLLRSAAGRTMSQGRTISQAPARRERPRKDPRLRHLRTREKRGPSGCSGGPNTVYLQVVAAGSRDS
GAALYVFSEFNRYLFNCGEGVQRLMQEHKLVARLDNIFLTRMHWSNVGGLSGMILTLETGLPKCVLSG
PPQLEKYLEAIKIFSGPLKGIELAVRPHSAPEYEDETMVYQIPIHSEQRRGKHQPWQSPERPLSRLSPE
RSSDSELNENEPHLPHGVSQRRGVDRSSLVVAFICKLHLKRGNFLVLKAKEMGLPVGTAAIPIIAAVKD
GKSITHEGREILAEELCTPPDPGAAFVVVECPDESFIQPIICENATFQRYQGKADAPVALVHMAPASVLV
DSRYQQWMERFGPDTQHLVLENENCASVHNLRSHKIQTQLNLIHPDIFPLLTSFRCKKEGPTLSVPMVQGE
CLLKYLRRPREWQRDAIITCNPEEFIVEALQLPNFQQSVQEYRRSAQDGPAPAEKRSQYPEIIFLGTGS
AIPMKIRNVSATLVNISPDTSLLLDCGEGTFGQLCRHYGDQVDRVLGTLAAVVFVSHLHADHHTGLPSILL
QRERALASLGKPLHPLLVVAPNQLKAWLQQYHNQCQEVLHHISMIPAKCLQEGAEISSPAVERLISLLLR
TCDLEEFQTCVLRHCKHAFGCALVHTSGWKVVYSGDTPMCEALVRMGKDATLLIHEATLEDGLEEEAVEK
THSTTSQAISVGMRMNAEFIMLNHFSQRYAKVPLFSPNFSEKVGVAFDHMKVCFGDFPTMPKLIPLKAL
FAGDIEEMEERREKRELQVRAALLSRELAGGLEDGEPQQKRAHTEEPQAKKVRAQ

TRTRPLEQKLISEEDLAANDILDYKDDDDKV

Tag:	C-Myc/DDK
Purity:	> 80% as determined by SDS-PAGE and Coomassie blue staining
Concentration:	>0.05 µg/µL as determined by microplate BCA method
Labeling Method:	Labeled with [U- ¹³ C ₆ , ¹⁵ N ₄]-L-Arginine and [U- ¹³ C ₆ , ¹⁵ N ₂]-L-Lysine
Buffer:	25 mM Tris-HCl, 100 mM glycine, pH 7.3
Storage:	Store at -80°C. Avoid repeated freeze-thaw cycles.
Stability:	Stable for 3 months from receipt of products under proper storage and handling conditions.
RefSeq:	NP_060597



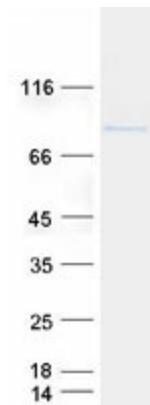
[View online »](#)

RefSeq Size:	3814
RefSeq ORF:	2478
Synonyms:	COXPD17; ELC2; HPC2
Locus ID:	60528
UniProt ID:	Q9BQ52 , A0A0S2Z5M8
Cytogenetics:	17p12

Summary: The protein encoded by this gene has a C-terminal domain with tRNA 3'-terminal processing endoribonuclease activity, which catalyzes the removal of the 3' trailer from precursor tRNAs. The protein also interacts with activated Smad family member 2 (Smad2) and its nuclear partner forkhead box H1 (also known as FAST-1), and reduced expression can suppress transforming growth factor-beta induced growth arrest. Mutations in this gene result in an increased risk of prostate cancer. Multiple transcript variants encoding different isoforms have been found for this gene. [provided by RefSeq, Sep 2009]

Protein Families: Druggable Genome, Stem cell - Pluripotency

Product images:



Coomassie blue staining of purified ELAC2 protein (Cat# [TP300764]). The protein was produced from HEK293T cells transfected with ELAC2 cDNA clone (Cat# [RC200764]) using MegaTran 2.0 (Cat# [TT210002]).